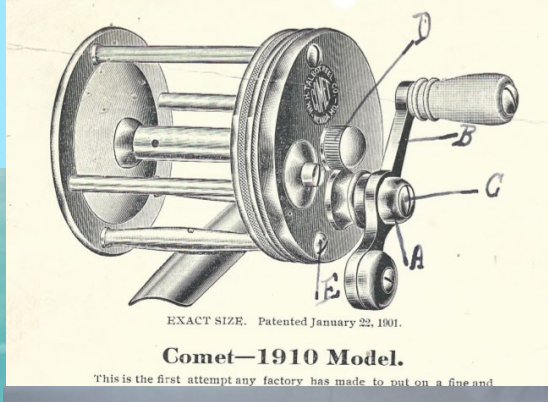




TALBOT HISTORICAL and ANTIQUE and CLASSIC REEL AUCTION CATALOG

Holiday Inn- City Centre
Tulsa, OK
Thurs., May 30th
Starts 8:00 AM
Preview on Weds
Auction lot list available on
April 8th
For more info, see or call:
Orcaonline.org
281-757-5054



SPONSORED BY:
ORCA
Old Reel Collectors Association
Join us for our
Tackle Show on
Fri & Saturday!

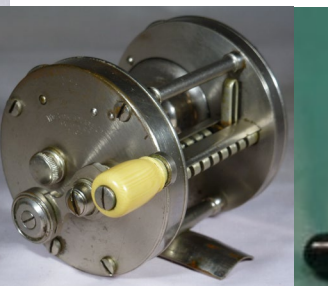


Table of Contents

Index of Reel Lots, by Manufacturer	1
Terms and Conditions	3
Talbot Letters and Ephemera (can be previewed in Tulsa)	4
Zebco Reels	7
Penn Reels	7
Ocean City Reels	11
Langley Reels	11
Heddon Reels	12
Meisselbach Reels	13
Meek Reels	13
Horton Reels	13
Abu Record Reels, Pt. 1	14
Abu Ambassadeur Reels	14
Garcia Saltwater Reels	14
Radius Reels	14
South Bend Reels	14
Coxe-Bronson Reels	15
Bronson Reels	16
Ted Williams, Redifor, A&I, Eppinger, Marquette, Hendrick, and Spiralwind Reels	17
Mixed Reel Lots, Miscellaneous, and Spincast Reels	17
Montague Reels	18
Pflueger Reels	19
Shakespeare Reels	22
Abu Record Reels, Pt. 2	26
Julius and Edward Vom Hofe Reels	27
Orvis Spinning Reels	27
Fin Nor Spinning and Fly Reels	27
Hardy and British Fly Reels	28
Bogdan, Abu Record, and Horton-Meek Fly Reels	28
Pflueger Fly Reels	28
Select Auction Lot Photos	29
Absentee Bid Form (2 pages)	73

Index of Reel Lots by Manufacturer

Manufacturer/Retailer	Lots	Pages
Abbey and Imbrie	210, 270, 291	13, 17, 19
Abu - Ambassadeur	230 - 234	14
Abu - Record	228, 229, 350 - 355	14, 26 - 27
Abu - Record (Fly)	383	28
Abu - Record (Spinning)	356 - 358	27
B. F. Meek & Sons	218 - 221	13
Bal Cli	277	18
Bogdan (Fly)	382	28
Bronson	264 - 268	16
Coxe - Bronson	249 - 263	15 - 16
Edward Vom Hofe	360 - 363	27
Eppinger	271	17
Fin Nor (Fly)	367 - 377	27
Fin Nor (Spinning)	366	27
Firestone	279	18
FreLine	282	18
Garcia	229 - 235, 275	14, 17
Great Lakes	276, 283	17, 18
Gulf Reel Company	277	18
Hardy (Fly)	379 - 381	28
Heddon	199 - 205, 348	12 - 13, 26
Hendryx	277	18
Horricks Ibbotson	266, 275	16, 17
Horton - Meek	221 - 227	13 - 14
Horton - Meek (Fly)	384	28
Humpal	284	18
Inglis	349	26
Johnson	281	18
Julius Vom Hofe	275, 359	17, 27
Kalamazoo Tackle	275, 276	17
Langley	186 - 198A	11 - 12
Marquette	272	17
Meisselbach	206 - 217	13
Montague	275, 285 - 292	17, 18 - 19
Ocean City	175 - 185, 276, 277	11, 17 - 18
Other British (Fly)	378	28
Orvis (Spin)	364, 365	27
Penn	67 - 174	7 - 11
Pennel	286, 289, 292	18, 19
Pflueger	293 - 316	19 - 21
Pflueger (Fly)	385 - 389	28
Radius	236	14
Ranger	277	18

Manufacturer/Retailer	Lots	Pages
Redifor	269, 314, 315	17, 21
Shakespeare	267, 269, 270, 317 - 349	16, 17, 21 - 26
Shapleigh	277	18
Simplicity	277	18
South Bend	237 - 248	14 - 15
Spiralwind	274	17
Ted Williams (Sears)	267	16
Thor	283	18
Whiting & Hendrick	273	17
Union Hardware	278	18
Zebco	63 - 66, 281	7, 18

ORCA Auction (May 30, 2019) Terms and Conditions

Old Reel Collectors Association, hereinafter referred to as "ORCA".

Any participation, transaction or involvement with ORCA indicates your acceptance of these Terms and Conditions.

1. ORCA reserves the right to deny or end participation for any Bidder, Buyer or Seller at any time. ORCA reserves the right to withdraw any property prior to sale without explanation.
2. ORCA's bidding records will be deemed conclusive in all respects and will be final. In the event of two identical absentee bids, the first bid received will be the successful bid.
3. If items are shipped, they will be shipped to the address provided by the Buyer following payment for won lot(s). ORCA will not be held responsible for address errors.
4. Any participation in a ORCA's auction shows a legal agreement between the parties and constitutes a real transaction. Any Seller, Bidder or Buyer recognizes and accepts the existence of this binding contract.
5. Shill bidding is absolutely forbidden, it is prohibited by law and will not be tolerated. Sellers may not place a bid on any item/lot they list in a ORCA's auction. If we receive proof of illegal bidding, the Seller will be banned from participation in all future ORCA auctions and will be reported to the necessary authorities for criminal prosecution.
6. Payment in full is due by noon on May 31, 2019: the day following the auction. After that time, the Buyer will be considered in default. A \$45.00 fee will be charged for any returned check. Buyers that do not complete a transaction in good faith and in accordance with these Terms and Conditions will be blocked from participation in all future ORCA auctions and venues permanently.
7. ORCA reserves the right to hold merchandise until the check has cleared. Makers of bad checks will be denied future bidding privileges and may be prosecuted. Non-payer information will be shared or published at ORCA's discretion.
8. In the event of Buyer non-payment, ORCA reserves the right to charge the defaulter's registration credit card for any amount owed until paid in full.
9. It is the responsibility of all participants to provide their correct current shipping address and contact information during the auction registration. Third party shipping requires a signed release from the Buyer absolving the Seller and ORCA from all liabilities, including damage, theft or loss. International shipping to a country with a USPS insurance maximum below the purchase price of the item requires a signed release from the Buyer absolving the Seller and ORCA from all liabilities, including damage, theft or loss, or additional shipping charges are to be paid by the purchaser to use a different carrier with full insurance coverage.
10. ORCA will not be held liable or responsible for failure to execute bids, reserves, or complete any transaction.
11. All lots are put up for sale subject to a reserve price imposed by the Seller.
12. A buyer's premium of 10% will be charged for all auction purchases, applied to all property sold, to be paid by the Buyer as part of the purchase price. This commission, based on the hammer or sale price, is paid to ORCA by the Buyer.
13. A seller's premium of 10% will be charged for all auction purchases, applied to all property sold, to be paid by the seller. The 10% seller's premium will be deducted from sale totals submitted to Sellers.
14. Seller, Bidder, Buyer, consignor, independent contractor, employee, or any person whatsoever expressly acknowledges and agrees that in no event shall ORCA, as well as its, officers, representatives, independent contractors or employees be liable for compensatory, incidental, consequential, or any damages whatsoever. ORCA shall be held harmless from any person whatsoever with respect to any and all claims, including but not limited to, liability for loss, damage or injury of any kind.
15. ORCA will not be held responsible or liable by any party for selling delays, canceled lots, withdraws, changes in auction conditions, dates, change of venue, delayed or canceled listings, a partial or entire canceled auction, no matter the cause or reason.
16. In the event of failure to comply with any of ORCA's conditions, the damage recoverable from the defaulter or offender shall include, but is not limited to, any loss, added expenses to ORCA, reasonable attorney fees, all legal action expenses.
17. This contract contains the complete, exclusive, and final agreement of the parties, being no understanding, no oral or other written agreement, inducement, promise, representation or warranty than is included in this Terms and Conditions, any such matter has been merged into this agreement and does not survive its execution. If any portion of this contract is for any reason proven invalid or unenforceable the remainder shall remain valid and enforceable.

Lot #	Manufacturer	Description	Opening Bid
O 1	Talbot order and correspondence	1911-12. W H Stewart (Paris, Fr.) ordered No. 53 and 54. Talbot response about proper care for the reels is on three sheets of Talbot company letterhead. 5 p. total	\$30.00
O 2	Testimonial letter and Talbot's reply	1910-1911. Reply to a catalog request on front and office copy of letter of accolades from Theodore Toll, VP of the Anglers Club of Milwaukee to Wm H. Talbot Reel Company on back. On Talbot letterhead. Toll's letter is on colorful resort letterhead. 2 p. total	\$30.00
O 3	Order fulfillment	1914. Office copy of order fulfillment to Wyeth Hardware. Talbot letterhead. Rare transitional Nevada to KC letterhead. 1 p.	\$15.00
O 4	Talbot correspondences	1898 to 1909. Talbot correspondence with Gorrick. Correspondences discuss entering the Australian market, challenges with keeping up with orders, etc. Includes Talbot and Standard Motor Construction Company letterhead. 5+ p. total.	\$30.00
O 5	Notes	Lists weights of reel spools and some reels (Comet, Meteor, Niagua, Ben Hur 1 & 2). Likely associated with shipment to France. On KC Talbot letterhead. 1 p.	\$10.00
O 6	Talbot correspondences	1912-14. Between Wyers Freres (major retailer, France) and Talbot. Discussion of Talbot's reels replacing Meek line and also orders. Includes letterhead from both companies. 6+ p. total.	\$30.00
O 7	Talbot correspondences	1919. Office drafts (not on letterhead) of Talbot's replies to M. Robert (Grands Magazins du Louvre, Paris, France) explaining challenges that WWI had on reel production. 2 p.	\$10.00
O 8	Talbot correspondences	1919. Letter from Mr. Py (France) offering to be an agent for Talbot in France. Talbot discusses inability to fulfill orders (office draft). 2 p.	\$10.00
O 9	Talbot correspondences	1918. Office draft of letter from Talbot to Paris Pecheur, Paris, France, explaining inability to fulfill orders due to WWII. 1 p.	\$10.00
O 10	Testimonial letter	1899. Wonderful letter of accolades from J J Caldwell about Talbot reels to Talbot. On book publisher's letterhead. 2 p.	\$10.00
O 11	Talbot order and correspondence	1906 to 1915. Spectacular collection of orders and correspondences with one of Talbot's important retailers, George Worthington Company. Includes 9 orders and advertising requests to Talbot (eight on Worthington letterhead and one on a rare early Western Union Telegraph card) and one office draft of a reply from Talbot.	\$30.00
O 12	Talbot correspondences	1917. Two complaint letters about a reel repair, from Whaling & Sons (rod manufacturer) to Talbot, and office draft of Talbot's response. Only complaint letter in Talbot files!	\$15.00
O 13	Talbot correspondences	1917-18. A collection of letters and orders from P Guyonnet, Paris, France to Talbot on great French company letterhead. Includes two orders for over 20 reels each, as well as Guyonnet's request to add Talbot reels to his sales inventory and a 5-page discussion of unfair pricing of Talbot reels in France.	\$15.00
O 14	Talbot correspondences	1914. A catalog request from Manufacture Franceaise d'Armes et Cycles and a request to add Talbot reels to company offerings. Nice French retailer's letterhead	\$10.00
O 15	Talbot records	1913. Two issues of the Casting Club de France's newsletter.	\$10.00

Lot #	Manufacturer	Description	Opening Bid
O 16	Talbot correspondences	1915-16. Two letters from George Knight (well-known author, England) requesting a catalog and additional information about Talbot reels.	\$10.00
O 17	Talbot correspondences	1904. Letter from J Temple Stout (England) requesting catalog and also discussing Leonard, Farlow, and Hardy tackle	\$10.00
O 18	Talbot correspondences	1910. Letter from Edward Turner Whitelow (England)--most respected astronomer of his day--ordering a 43 reel and accessories.	\$10.00
O 19	Talbot correspondences	1910. Request from Belgium for the addresses of the makers of the "Intrinsic" and "Leveson - Talbot" reels.	\$10.00
O 20	Talbot correspondences	1913-19. Three orders from Magasins du Louvre (Department Store), Paris, France, including an instruction for completing customs forms. On great French retailer's letterhead. Letters are written in French, with Talbot office staff's handwritten translations in margins. 7 p. total.	\$20.00
O 21	Talbot correspondences	1918. A catalog request to Talbot, on behalf of the 2nd Duc de Valencay (a nobleman), Paris, France.	\$10.00
O 22	Talbot correspondences	1914. Le Pecheur (a French fishing journal, published in Paris) was offering to sell Talbot advertising space. An example of the French fishing journal (with great ads) is included with the letter.	\$20.00
O 23	Talbot records	A rare 1923 catalog from the Richardson Rod & Reel Co., includes Talbot reels.	\$40.00
O 24	Talbot correspondences	1914. A E Swoyer (noted fishing author) corresponds with Talbot about affordable good fishing reels. Talbot's office draft of a response to Talbot is included on the back of one of Swoyer's letters. Two letters, on Swoyer's letterhead.	\$20.00
O 25	Talbot correspondences	1903. A letter of praise from a professor at Cottey College about Talbot's reels. Perhaps the most glowing recommendation ever written for a reel! On great early college letterhead. Includes a retyped copy of the letter--possibly as a draft for advertising.	\$20.00
O 26	Talbot correspondences	1903. Testimonial letter on Joseph Hunter's personal letterhead.	\$15.00
O 27	Talbot correspondences	1910-11. Two testimonial letters from noted fishing author Robert H. Davis, on publisher's and Davis's personal letterheads.	\$20.00
O 28	Talbot correspondences	1903. Testimonial letter from B J Kellenberger (noted tournament caster and officer in the Chicago Fly Casting Club) and discussing a large bass caught on a Talbot reel.	\$10.00
O 29	Talbot correspondences	1917. Testimonial letter from C F Newpher (noted tournament caster and outdoor column/magazine editor) on newspaper letterhead.	\$10.00
O 30	Talbot correspondences	1917. Handwritten testimonial letter from Martin Adler.	\$10.00
O 31	Talbot correspondences	1915. Two testimonial letters from R G Cochran on wonderful Winter Loeb Grocery Co. letterhead.	\$10.00
O 32	Talbot correspondences	1910. Two testimonial letters from J W Bramhall (noted tournament caster) on his company's letterhead.	\$15.00

Lot #	Manufacturer	Description	Opening Bid
O 33	Talbot correspondences	1916. Thank you note for a gratis Talbot fly reel and testimonial from Fred Peet (all-time great tournament caster, noted fisherman, and fly designer) on Empire Laundry company letterhead.	\$20.00
O 34	Talbot correspondences	1910. Testimonial letter from W R Rees on post office letterhead.	\$10.00
O 35	Talbot correspondences	1912. Two testimonials (to Talbot and Levens), noting a 253' cast that the author (George Chatt) made with a Talbot reel. On Chicago Police Dept. letterhead.	\$10.00
O 36	Talbot correspondences	1916. A thank you note from Louis Darling for a complementary Talbot fly reel, on wonderful Kingfisher letterhead.	\$15.00
O 37	Talbot correspondences	1916. Testimonial letter from R E Caskey, on great Atlas Powder Co. letterhead.	\$10.00
O 38	Talbot correspondences	1908. Letter from J B Kennard (noted Texas outdoorsman and lumber tycoon) praising Talbot reels and requesting a copy of tournament casting rules.	\$10.00
O 39	Talbot correspondences	1917. A request for a catalog from a sporting goods store (on their letterhead) and Talbot's office draft reply.	\$10.00
O 40	Talbot correspondences	1917. Testimonial letter from Alfonso Mercer and request for a reel repair.	\$10.00
O 41	Talbot correspondences	Testimonial letters from well known tournament casters and fisherman William Stanley (onion skin) and R. E. Steele (photocopy)	\$10.00
O 42	Talbot correspondences	1917. Testimonial letter from C L Stanley (former world record holder for largest channel catfish) on Cincinnati Public Library letterhead.	\$10.00
O 43	Talbot correspondences	1912. Envelope for apparent reel order (order or letter not present) from England. Back of envelope has notes about reels and price ranges, including Meteor, Niagua, 3, 2, 50, and Talbot Special.	\$10.00
O 44	Talbot records	Apparent introductory flyer for the 1910 model Comet with image and description. Includes handwritten callouts. Likely a draft for a catalog advertisement.	\$30.00
O 45	Talbot records	1907? "The Talbot Fishing and Tournament Reels, A Few Records Made with Them" Four handwritten pages of Talbot records, apparently at the request of VL&A. Also, a hand-corrected mimeograph of a condensed list of records (per handwritten instructions) on back of Talbot letterhead. A second copy has the same handwriting to corrections, but done separately. Back of the mimeograph is the August 31, 1905 semiannual financial statement for the Farm and Home Savings and Loan Association of Missouri, for which E E Levens is secretary.	\$25.00
O 46	Talbot records	1916-20. Five company policy documents for employees. Great info!	\$20.00

Lot #	Manufacturer	Description	Opening Bid
O 47	Talbot records?	1941? advertising flyer for Welch handmade reels and Jack Welch's business card. This lot includes a photocopy of a 1951 letter from Jack Welch discussing reels that Talbot manufactured when Welch worked with Talbot.	\$30.00
O 48	Talbot records	1880 Democrat Almanac, Vernon County, W. R. Crockett & Co. Spectacular, beautifully illustrated, and rare early Missouri county almanac, containing one of the earliest known advertisements for William Talbot's jewelery store.	\$30.00
O 49	Talbot records	"How to Take Care of a Reel"/"How to Become a Bait Caster" fold out flyer. Undated, but from Nevada, MO. Bit of edge wear, but otherwise nice and extremely rare.	\$30.00
O 50	Talbot records	Price list from Harrison, Bartleet & Co. (England), Talbot's supplier for fishing line. Undated.	\$10.00
O 51	Unknown	1949. Great early and rare dealer catalog for Benjamin Air Rifles.	\$10.00
O 52	Unknown	1887. Receipt for shutter hinges from an Evansville, IN hardware store, with nice graphic of an early Parker shotgun.	\$5.00
O 53	Unknown	1946. Letter to George Beck on great company letterhead from Richardson Rod & Reel Co.	\$10.00
O 54	Unknown	1923. Letter to George Beck on great company letterhead from Shakespeare Fishing Tackle Co.	\$10.00
O 55	Unknown	1923. Letter to George Beck on great company letterhead from Shakespeare Fishing Tackle Co.	\$10.00
O 56	Unknown	1945. Letter to George Beck on great company letterhead from VL&A.	\$10.00
O 57	Unknown	1945. Letter to George Beck on great company letterhead from VL&A.	\$10.00
O 58	Unknown	1946. Letter to George Beck on great company letterhead from Edward vom Hofe & Co.--perhaps latest known correspondence on this letterhead!	\$10.00
O 59	Unknown	1948. Letter to George Beck on great company letterhead from Rockland Tackle Co.	\$5.00
O 60	Unknown	1940. Letter to George Beck from Stratton & Terstegge Co. Falls City and My Buddy (tacklebox) logos are on letterhead.	\$5.00
O 61	Unknown	1937. Letter to George Beck from Kansas City Arms and Tackle Company, discussing what their historic retail prices were for Talbot reels.	\$5.00
O 62	Talbot Records	1910 to 1914. Three newspaper articles (clipped) about Talbot reels.	\$10.00
B 63	Zebco	Two Standard reels, both with red line caps.	\$10.00
B 64	Zebco	Two reels: No. 11--like new, and a No. 55 looks good but needs work or for parts.	\$10.00
B 65	Zebco	No. 55 new-in-the-box with papers	\$40.00
B 66	Zebco	Three reels: two Streamlites and a Lurecast. Bit scarce with the post-Langley Zebco branding. Nice tournament-style reels.	\$15.00
B 67	Penn	Squidder 140M, new in blue and white box	\$20.00
B 68	Penn	Silver Beach 99, new in blue and white box	\$20.00

Lot #	Manufacurer	Description	Opening Bid
B 69	Penn	Sailfisher 130, new in blue and white box	\$20.00
B 70	Penn	Long Beach 67, new in blue and white box	\$20.00
B 71	Penn	Leveline 350M. Appears unused but some corrosion, in blue and white box.	\$10.00
B 72	Penn	Leveline 350, new in tricolor fisherman and lighthouse box	\$20.00
B 73	Penn	Squidder Jr. 146L, new in tan box	\$15.00
B 74	Penn	Special Senator 3/0 112H, new in dark blue box	\$30.00
B 75	Penn	Senator 1/0 (No. 110), six oclock handle, cream mottled torpedo handle knob	\$20.00
B 76	Penn	Senator 2/0 (No. 111) five oclock handle, green mottled torpedo handle knob	\$20.00
B 77	Penn	Senator 3/0 (No. 112) five oclock handle, green mottled torpedo handle knob	\$15.00
B 78	Penn	Senator 3/0 (No. 112) five oclock handle, green mottled torpedo handle knob. Some plating loss on cross bars	\$15.00
B 79	Penn	Special Senator 4/0, amber wood grain torpedo knob, 7-oclock handle.	\$10.00
B 79A	Penn	Senator 6/0 (No. 114), 7 oclock handle, large light wood torpedo handle.	\$15.00
B 80	Penn	Senator 9/0 (No. 115) , 7 oclock handle, large dark wood torpedo handle.	\$30.00
B 80A	Penn	Senator 10/0 (No. 116A), 7 oclock handle, large dark wood torpedo handle, with harness hardware. Appears unusued.	\$30.00
B 81	Penn	Senator 12/0 (No. 116), 5 oclock handle, amber wood-grained torpedo handle.	\$50.00
B 82	Penn	Coronado (150 yd/No. 92), wood bulbous knob, waffle click	\$15.00
B 83	Penn	Monofil No. 25, metal spool , cream mottled torpedo handle.	\$10.00
B 84	Penn	Monofil No. 27, metal spool, cream mottled torpedo handle	\$10.00
B 85	Penn	Long Beach (250 yd/No. 60), red mttledd torpedo handle knob, standard nipple click	\$10.00
B 86	Penn	Seagate (No. 125), wood torpedo handle knob, hexagonal nipple click.	\$15.00
B 87	Penn	Peer 109	\$10.00
B 88	Penn	Peer 109	\$10.00
B 89	Penn	No. 155 (Beachmaster, 175 yd), yellow mottled torpedo handle knob	\$10.00
B 90	Penn	No. 155 (Beachmaster, 175 yd), red mottled torpedo handle knob	\$10.00
B 91	Penn	No. 160 (Beachmaster, 150 yd), red torpedo handle knob, metal spool	\$10.00
B 92	Penn	No. 160 (Beachmaster, 150 yd), red torpedo handle knob, black plastic spool	\$10.00
B 93	Penn	No. 180 (Extra Light Casting Reel, 100 yd), black torpedo handle knob	\$10.00
B 94	Penn	No. 190 (Light Weight Bay Reel, 100 yd), amber bulbous handle knob	\$10.00
B 95	Penn	Squidder (No. 140, 200 yd), early, cream torpedo handle knob	\$10.00
B 96	Penn	Surfmaster No. 200, metal spool, cream torpedo handle knob	\$10.00
B 97	Penn	Surfmaster No. 200, black plastic spool, red torpedo handle knob	\$10.00
B 98	Penn	Surfmaster No. 250, black plastic spool, red torpedo handle knob	\$10.00
B 99	Penn	Jigmaster No. 500, maroon side plates, cream torpedo handle knob	\$10.00

Lot #	Manufacturer	Description	Opening Bid
B 100	Penn	Surfmaster No. 200, black plates, cream torpedo handle knob, in rough correct tricolor fisherman and lighthouse box, with Catalog No. 18 with Instruction Manual and Repair Part List	\$15.00
JM 101	Penn	No. 14 Atlantic, wood bulbous knob, standard nipple click	\$10.00
JM 102	Penn	Deep Sea Angler, No. 20, wood bulbous knob, waffle click (scarce early trade 14)	\$10.00
JM 103	Penn	No. 15 (FS), wood bulbous knob, waffle click	\$10.00
JM 104	Penn	No. 15 (FS), wood bulbous knob, waffle click	\$10.00
JM 105	Penn	Surf Angler, No. 25, wood bulbous knob, waffle click, leather brake (early Trade 15)	\$10.00
JM 106	Penn	Seagate, wood torpedo handle knob, hex click	\$10.00
JM 107	Penn	Seagate, wood torpedo handle knob, hex click	\$10.00
JM 108	Penn	Seagate, amber translucent torpedo handle knob, standard nipple click	\$10.00
JM 109	Penn	Bridge City (250 yd/No. 100), wood bulbous knob, waffle click	\$10.00
JM 110	Penn	Seaford (300 yd/No. 75), beige torpedo handle knob, waffle click	\$10.00
JM 111	Penn	Bayhead (2nd year version), beige torpedo handle knob, waffle click	\$10.00
JM 112	Penn	Bayhead (intro version), bulbous mottled handle knob, waffle click	\$10.00
JM 113	Penn	Long Beach (2 words) (250 yd/No. 60) wood bulbous knob, waffle click	\$10.00
JM 114	Penn	Longbeach (250 yd/No. 60), wood knob, waffle click	\$10.00
JM 115	Penn	Long Beach (2 words) (300 yd/No. 65) wood bulbous knob, waffle click	\$10.00
JM 116	Penn	Long Beach (2 words) (300 yd/No. 65) wood torpedo knob, waffle click	\$10.00
JM 117	Penn	Longbeach (300 yd/No. 65), beige torpedo handle, standard nipple click	\$10.00
JM 118	Penn	Long Beach (2 words) (400 yd/No. 66) mottled bulbous knob, waffle click	\$10.00
JM 119	Penn	Longbeach De Lux (300 yd/No. DL65), beige torpedo handle knob, waffle click	\$15.00
JM 120	Penn	Coronado (300 yd/No. 95), wood bulbous knob, waffle click	\$10.00
JM 121	Penn	Anglesea (250 yd/No. 47), wood bulbous knob, waffle click, 1-year reel.	\$10.00
JM 122	Penn	Monofil 25, gray body and spool, orange knob	\$15.00
JM 123	Penn	Monofil 25, dark maroon body and spool, green knob	\$10.00
JM 124	Penn	No. 49, Super Mariner, white torpedo handle knob	\$10.00
B 124A	Penn	No. 49, Super Mariner, white torpedo handle knob	\$10.00
B 124B	Penn	No. 49, Super Mariner, peach torpedo handle knob	\$10.00
JM 125	Penn	No. 49, Deep Sea Angler, wood-grained torpedo handle knob, locking seat, ventilated spool	\$10.00
JM 126	Penn	No. 60 Long Beach, white torpedo handle knob	\$10.00
JM 127	Penn	No. 65 Long Beach, white torpedo handle knob.	\$10.00
JM 128	Penn	No. 66 Long Beach, small dark green torpedo handle knob	\$10.00
B 128A	Penn	No. 66 Long Beach, small wood grain torpedo handle knob	\$10.00
JM 129	Penn	No. 66 Long Beach, large light green torpedo handle knob	\$10.00
JM 130	Penn	No. 66 Long Beach, small red torpedo handle knob	\$10.00
JM 131	Penn	No. 68 Long Beach, counter-balanced handle, red torpedo knob	\$10.00
JM 132	Penn	No. 68 Long Beach, power handle, oversized red torpedo knob	\$10.00
JM 133	Penn	No. 85, bulbous wood handle knob	\$10.00
JM 134	Penn	No. 85, bulbous wood handle knob	\$10.00

Lot #	Manufacurer	Description	Opening Bid
JM 135	Penn	No. 85, conical white conical handle knob	\$10.00
JM 136	Penn	No. 85, conical white conical handle knob	\$10.00
JM 137	Penn	No. 85, conical yellow conical handle knob	\$10.00
JM 138	Penn	No. 85, conical red conical handle knob	\$10.00
JM 139	Penn	No. 130 Sailfisher, small green mottled torpedo handle knob	\$10.00
JM 140	Penn	No. 130 Sailfisher, large beige torpedo handle knob	\$10.00
JM 141	Penn	No. 149 Deep Sea Reel, white torpedo handle knob	\$10.00
JM 142	Penn	No. 149 Deep Sea Reel, white torpedo handle knob	\$10.00
JM 143	Penn	No. 149 Deep Sea Reel, presentation? Gold-plated? Drab torpedo handle knob	\$10.00
JM 144	Penn	Senator 1/0 (No. 110), six oclock handle, green mottled torpedo handle knob	\$20.00
JM 145	Penn	Senator 2/0 (No. 111) five oclock handle, white torpedo handle knob	\$20.00
JM 146	Penn	Senator 3/0 (No. 112) five oclock handle, white torpedo handle knob	\$15.00
JM 147	Penn	Senator 3/0 (No. 112) five oclock handle, white torpedo handle knob	\$15.00
JM 148	Penn	Senator 113 (4/0), seven oclock handle, white torpedo handle knob	\$15.00
JM 149	Penn	Senator 113 (4/0), seven oclock handle, black torpedo handle knob	\$15.00
JM 150	Penn	Special 4/0 Senator 113H , maroon, eight oclock power handle, black torpedo handle knob	\$15.00
JM 151	Penn	Senator 6/0 (No. 114), logo at 3 oclock, power handle, beige torpedo handle knob	\$15.00
JM 152	Penn	Senator 114-H (6/0) logo at 11 oclock, power handle, beige torpedo handle knob	\$15.00
JM 153	Penn	Senator 9/0 (No. 115)	\$30.00
JM 154	Penn	No. 155 (Beachmaster, 175 yd), beige mottled torpedo handle knob	\$10.00
JM 155	Penn	No. 160 (Beachmaster, 150 yd), beige torpedo handle knob	\$10.00
JM 156	Penn	No. 249, Deep Sea Reel, bulbous wood handle knob	\$10.00
JM 157	Penn	No. 249, Deep Sea Reel, bulbous wood handle knob	\$10.00
JM 158	Penn	No. 285 Delmar, cream torpedo handle knob	\$10.00
JM 159	Penn	No. 349, Master Mariner (H configuration, one lever), olive mottled torpedo handle knob	\$10.00
JM 160	Penn	No. 349, Master Mariner (HC configuration, two levers), olive mottled torpedo handle knob	\$10.00
JM 161	Penn	No. 350 Leveline, cream torpedo handle knob	\$10.00
JM 162	Penn	No. 600 Jigmaster, cream torpedo handle knob	\$10.00
JM 163	Penn	Peerless No. 9, yellow torpedo handle knob	\$10.00
JM 164	Penn	Peerless No. 9, black torpedo handle knob	\$10.00
JM 165	Penn	Peer, No. 109, black plates, yellow double handle knob	\$10.00
JM 166	Penn	Peer, No. 109, black plates, green double handle knob	\$10.00
JM 167	Penn	Peer, No. 209, black plates, cream torpedo handle knob	\$10.00
JM 168	Penn	Peer, No. 209, maroon plates, cream torpedo handle knob	\$10.00
JM 169	Penn	No. 309 Level Wind, black paddle handle knob	\$10.00
JM 170	Penn	No. 309 Level Wind, black paddle handle knob	\$10.00
JM 171	Penn	No. 320 Gti (Graphite Super Levelwind), black torpedo handle knob	\$10.00

Lot #	Manufacturer	Description	Opening Bid
JM 172	Penn	Peer, No. 309, maroon Plates, green torpedo handle knob, in blue & white correct box	\$15.00
JM 173	Penn	Peer, No. 109, maroon plates, green double handle knob, in correct tricolor fisherman and lighthouse box	\$15.00
JM 174	Penn	No. 259, Long Beach, Live Bait Caster, orange mottled torpedo handle knob	\$10.00
JM 175	Ocean City (?)	All Coast Free Spool, 250 yd., star drag, black anodized (?) plating over brass, 1930's Trade reel?	\$10.00
JM 176	Ocean City	Long Key, 450 yd (approximately 6/0), - Bakelite and German silver, with star drag, 250 yards, wood knob. Appears unused. Very early!	\$25.00
B 177	Ocean City	Big Game, No. 605, 5/0 size, appears unused, as new	\$10.00
B 177A	Ocean City	Big Game, No. 606, 6/0 size, light to moderate wear, minor plating loss on spool axis.	\$10.00
B 178	Ocean City	Three reels, all appear unused, as new: Zephyr - high quality, light alloy take-apart bay reel with star drag, 150 yards. Bay City (No. 112) - Bakelite and chromium-plated brass, with star drag, 250 yards. No. 110 (Seattle) - Bakelite and chromium-plated brass with star drag, 250 yards (but much larger than Bay City 112 - approximately 3/0).	\$20.00
B 179	Ocean City	Three reels, first two appear unused, as new: Inductor 250 - magnetic anti-backlash 200-yard surf reel with free-spool and star drag; "Texolite" spool and side plates. 965 (Far Caster) - 200-yard levelwind surf reel with free-spool and star drag with Bakelite side plates and grey anodized spool. 255 (Inductor) - lightly-used, high quality 200-yard levelwind surf reel, combining the best features of the 965 Far Caster and the Inductor 250.	\$20.00
B 180	Ocean City	Fantom 135: high quality, light alloy take-apart bay reel with star drag, 300 yards. New in early blue leaping fish logo box.	\$20.00
B 181	Ocean City	Ike Walton 105: high quality, Bakelite and chromium-plated take-apart 300 yard reel with free-spool and star drag. New in early blue leaping fish logo box, warranty card.	\$20.00
B 182	Ocean City	Far Kast Bay City (112w): Bakelite and chromium-plated brass, with star drag, support cross-bars for harness attachment, 250 yards. New in early blue leaping fish logo box, warranty card and original tissue.	\$20.00
B 183	Ocean City	Bay City (165): Bakelite and chromium-plated brass, with star drag, 400 yards. New in early blue leaping fish logo box.	\$20.00
B 184	Ocean City	St. Lucie (No. 979) : Bakelite and chromium-plated brass with star drag and free-spool, 100 yards. New in light and dark blue checkered box with warranty and parts list.	\$20.00
B 185	Ocean City	Topsail (No. 940): Bakelite and chromium-plated brass with star drag, handle control lever, and removable levelwind, 100 yard. Unused (but has line on spool) in light and dark blue checkered box with warranty and parts list.	\$20.00
B 186	Langley	Langley collection starter set (six reels) from the king of colorful tournament-weight reels: includes one each in VG+ to Exc. +: Whitecap, Plugcast, Lurecast, Reelcast, Streamlite, Cast-Rite.	\$30.00

Lot #	Manufacturer	Description	Opening Bid
B 187	Langley	Shorty varieties (two reels): both Exc.+ one standard grey anodized and one rare black anodized.	\$20.00
B 188	Langley	Round-body narrow spool collection (3 reels): Standard red Lurecast (a little anodized wear but nice), red Lurecast with metal tailplate rim (Model 330 KC, a little anodized wear), scarce and beautiful Target (unused).	\$35.00
B 189	Langley	Reelcast varieties (two reels: both appear unused with minor handling wear): includes standard grey anodized and beautiful and rare burnt orange anodized varieties.	\$25.00
B 190	Langley	Scarce teardrop shaped varieties (two reels): Speedcast in olive anodized with metal tailplate rim (very minor anodized wear) and black anodized Speedy (unused).	\$20.00
B 191	Langley	Lakecast collection (2 reels): Lakecast in matte silver finish and Lakecast Deluxe in mirror silver and dark brown anodized finish. Both appear lightly used (Exc.)	\$15.00
B 192	Langley	Two reels: Standard Reelcast (grey anodized) and Plugcast (mirror silver and dark brown anodized). Reelcast is a bit dirty (not bad) and both reels are a little tight. Put them on your shelf as is or clean them up to Exc.+	\$10.00
B 193	Langley	Two varieties of Cast-Rites (380A). Standard variety with dark brown faceplate inset, tail plate and space (Exc.+) and variation with medium grey faceplate inset (Exc.+ in correctly labeled grey box).	\$15.00
B 194	Langley	Lurecast (330): New in nice red, correctly labeled box.	\$15.00
B 195	Langley	Lakecast: New in nice grey, correctly labeled box, with papers.	\$15.00
B 196	Langley	Whitecap (light bay reel) exc (but with line on it) in correctly labeled navy box, with pouch and papers. Box lid has seam splits but is all there.	\$10.00
B 197	Langley	Lurecast (330KC): VG+ to Exc.- in faded, correctly labeled box,with pouch.	\$10.00
B 198	Langley	Two varieties of Streamlites: Black anodized 310 KC with metal tailplate rim and rare 310A with solid royal blue anodized plates.	\$50.00
B 198A	Langley	Two saltwater reels, both nonlevelwind with freespool and star drag: DynaFlow Model 490 (looks unused, but needs mechanical adjustment) and DynaMatic Model 444 (Exc.-).	\$10.00
B 199	Heddon	45: German silver and nickel-plated brass, double handle, with Carter patents, Exc.	\$50.00
B 200	Heddon	3-15: German silver, double handle, Exc. +	\$50.00
B 201	Heddon	3-25: German silver, double handle, Exc. +	\$50.00
B 202	Heddon	3-35: German silver, double handle, Exc. +	\$50.00
B 203	Heddon	Chief Dowagiac, Snarl Free, No. 4: nickel-plated brass. Click is not functioning. Otherwise Exc.+	\$20.00
B 204	Heddon	Pal P41N: Unused in correct box. Anodized black. Balsawood arbor. Beautiful!	\$50.00

Lot #	Manufacurer	Description	Opening Bid
B 205	Heddon	Heddon Pal colletcion: includes 4 reels VG+ to Exc (but may clean-up even better): P41N with cork arbor and black anodized plates. P41 with black anodized plates. P41 with silver plates. Scarce P41S (heavy duty for saltwater use) with silver plates.	\$40.00
B 206	Meisselbach	Freespool Takapart, Exc.-	\$10.00
B 207	Meisselbach	Tri-Part one ring, with fixed back plate with patents through 1907, Exc.	\$25.00
B 208	Meisselbach	Tripart 582 (double handle version), Exc.	\$10.00
B 209	Meisselbach	Tri-Part Freespool with patents through 1907 on tailplate and 1909 patent on faceplate (large). Intro variety?	\$10.00
B 210	Meisselbach	Tripart Abbey & Imbrie, NY. Meisselbach with Ohio address on bottom of the foot.	\$10.00
B 211	Meisselbach	Takapart 480 and Tripart 580, both NJ, Exc.	\$10.00
B 212	Meisselbach	Takapart 480 and Tripart 580, both Ohio, Exc.	\$10.00
B 213	Meisselbach	Starter collection (6 reels): all function well. VG to Exc. (all should clean up to at least VG+) All Ohio. Includes: Takapart 480, Freespool Takapart 481, Tripart 580, Symploreel Level-Winder 252, Symplupart 252, and Symploreel Level-Winder Non-Backlash 257	\$30.00
B 214	Meisselbach	250-series collection (4 reels, all Exc. to Exc.+), includes: Symploreel Level-Winder 252, Symplupart 252, Symploreel Non-Backlash 255, and Symploreel Level-Winder Non-Backlash 257	\$20.00
B 215	Meisselbach	Okeh collection (3 reels, VG+ to Exc.), includes: 620 (freespool, dropping levelwind), 625 (dropping levelwind), 630 (standard levelwind)	\$20.00
B 216	Meisselbach	Symploreel levelwind collection (4 reels, all Exc.), includes 552 Blackstone, 752, 1000 Superlite, and Congress Black Beauty (a scarce trade reel for Supplee Hardware that combines features of the 552 and 752).	\$35.00
B 217	Meisselbach	Three reels: Okeh 625 (dropping levelwind) in VG+, Okeh 630 (standard levelwind) in VG+, and Surf 625 (body is VG+ but is not functioning, missing a gear???)	\$15.00
B 218	B F Meek and Sons	No. 3, jeweled end caps, all stampings at 6 oclock, 3 oclock handle, sliding click only. Serial #2927. Exc. Early and nice!	\$50.00
B 219	B F Meek and Sons	No. 25, Carter patents on tailplate. Handle knob screw has some damage and knob is a little loose, otherwise a strong Exc.	\$40.00
B 220	B F Meek and Sons	No. 33, 1904 Carter patent and "Patents Pending" on faceplate, other stampings are on tailplate. Dark hard rubber handle knob. Early, shortly after transition for Bluegrass Reel Works. Exc.	\$40.00
B 221	B F Meek and Sons	No. 34, with reel name, Medley and 1905 Carter patents on faceplate. "C" on foot. Not marked Meek or Horton. Likely a transitional reel. Exc.+	\$40.00
B 222	Horton	No. 3 Bluegrass, jeweled bearings, Serial # 16265. Exc.+	\$50.00
B 223	Horton	No. 3 Bluegrass, non-jeweled bearings, Serial # 14350. Exc.+	\$40.00
B 224	Horton	No. 3 Meek, jeweled bearings, narrow spool, serial #8649. Exc. (could clean up to Exc.+)	\$50.00

Lot #	Manufacturer	Description	Opening Bid
B 225	Horton	No. 3 Meek, jeweled bearings, narrow aluminum spool with balsa arbor, tiny tournament handle, serial #10433. Exc.+ A jewel of a tournament reel!	\$100.00
B 226	Horton	No. 25 Bluegrass Simplex. German silver. G on foot. Exc.	\$25.00
B 227	Horton	No. 34 Bluegrass Simplex (free spool) with aluminum spool and large balsawood arbor. P on foot. A very nice tournament reel!	\$40.00
B 228	Abu Record	Model 1600 C levelwind. Green handle knobs. Exc. In crisp early picture box, with pouch	\$30.00
B 229	Abu Record	Sport 2100 non-levelwind freespool tournament reel. Exc.+ (appears unused but has line spooled on it) in correct and very scarce blue Garcia box (for No. 1351 Abu 2100), with oiler, pouch, and registration card.	\$100.00
B 230	Abu Ambassadeur	2600: narrow spool, free spool levelwind, Exc.+ In brown leather Ambassadeur case.	\$25.00
B 231	Abu Ambassadeur	Garcia 3000 Ambassadeur: tan and maroon freespool levelwind with star drag, Exc. +. 00204 on smooth foot.	\$20.00
B 232	Abu Ambassadeur	Garcia 4000 Ambassadeur: deep red and black freespool levelwind with star drag, Exc. +. 730401 on dimpled foot.	\$20.00
B 233	Abu Ambassadeur	Ambassadeur 4600C: narrow spool, high speed, freespool levelwind with star drag and Garcia power handle. 780500 on dimpled foot. Exc.	\$20.00
B 234	Abu Ambassadeur	Ambassadeur 5000: freespool levelwind with star drag and double white knobbed handle. Three-screws on tailplate 633708 on smooth foot. Exc.+ with oiler and spare parts in brown leather Ambassadeur case.	\$25.00
B 235	Garcia	Saltwater non-levelwind conventional reel collection (four reels), with three Garcia Mitchell and one Kingfisher reels, including Captian Mitchell 602AP (freespool, star drag, white plastic and chrome-plated brass, black plastic spool, approximately 1/0 size), Mitchell 622 (freespool, star drag, white plastic and chrome-plated brass, metal spool, approximately 2/0 size), Mitchell 624 (freespool, star drag, white plastic and chrome-plated brass, metal spool, approximately 3/0 size), and a GK-71 (freespool, star drag, black plastic and nickel-plated brass). The Mitchell's--meant to compete with Penn Senator's are Exc but a bit dirty (no corrosion). The Kingfisher has line on it (shipped that way) and is new in the correct box	\$40.00
B 236	Radius (Sweden)	No. 300 Caster: levelwind, double red handle knobs, jeweled (clear) end caps. Mid-1940s and scarce. Exc.+	\$30.00
JM 237	South Bend	Liberty, 60 yd nonlevelwind, jeweled end caps, nickel-plated brass, offered in 1927 only. Exc. Tough to find in this condition!	\$10.00
B 238	South Bend	No. 60. Model C Maroon anodized aluminum. Narrow spool levelwind. South Bend's entry in the tournament reel market. Exc.	\$10.00
B 239	South Bend	1300A Super South Bend. Aluminum and German silver. The elite reel offered by South Bend in the early 30's. Beautiful reel. Exc.	\$20.00
B 240	South Bend	PerfectOreno No. 750. Classic antibacklash levelwind. New in crisp box with papers.	\$20.00

Lot #	Manufacturer	Description	Opening Bid
B 241	South Bend	No. 915 Oreno Trolling Reel: Levelwind w/antireverse and star drag. Unused in scarce intro box, with chamois bag.	\$20.00
B 242	South Bend	No. 1200 Level-Winding Anti-Backlash Reel. Nickel-plated German silver. Exc.+ in early (intro) box.	\$20.00
B 243	South Bend	Pre-1930 collection, containing a nice example of every numbered reel that carried the South Bend logo up to 1930, seven (7) reels in total, including: 1131A (non-levelwind) with small inset jeweled (clear) end caps, 1131A with large inset jeweled (red) end caps, 1131A with later jeweled end caps, 1131B with jeweled end caps, 900 non-levelwind, 1200 levelwind (nickel plated German silver), and 1000 levelwind. All Exc. or better. Great set with some tough varieties!	\$35.00
B 244	South Bend	3 varieties of the 1250 level-winding anti-backlash reel including: the scarce original 1250 (Exc.), offered for only about a year 1935 to 1936; 1250A (VG+), and the late 1940's 1250 Model E with double spacers. Spacers have maintained their integrity and this reel runs as smooth as new (Exc.+)	\$15.00
B 245	South Bend	1200 series collection (4 reels): some of South Bend's best reels, this includes Exc. or better examples of the 1200, 1201 (scarce), 1250A (VG+), and 1250 (scarce, when as smooth as this one).	\$20.00
B 246	South Bend	Tear-drop reel varieties (2 reels), includes the Smoothcast Direct Drive 790 (with wheel drag) and the South Bend No. 50, a light-weight lime green anodized reel (bit scarce).	\$10.00
B 247	South Bend	Collection of six (6) reels ranging from VG+ to Exc, including one each of the following models: 350-B, 550, 550-C, PerfectOreno 760. 915, and 1200.	\$15.00
B 248	South Bend	Collection of six (6) reels ranging from VG+ to Exc--with 2 mechanical exceptions noted--including: 550-G, PerfectOreno 760, 900 (non-levelwind), 1000, 1000-G (binds and small crack in spacer--maybe screwed too tight), 1200 (slight rough area in retrieve, likely due to worm gear wear.)	\$15.00
B 249	Coxe (Bronson)	No. 15 levelwind, German silver, beautiful reel and scarce, nice patina, Exc. to Exc.+	\$50.00
B 250	Coxe (Bronson)	No. 15 levelwind, German silver, beautiful reel and scarce, nice patina, small hole drilled in front part of the foot, otherwise a solid Exc.	\$50.00
B 251	Coxe (Bronson)	Expert 20 levelwind, German silver, jeweled bearings, anti-backlash adjustment. One of the best made Kentucky-style levelwinds ever made. Exc.	\$50.00
B 252	Coxe (Bronson)	Expert 20 levelwind, German silver, jeweled bearings, anti-backlash adjustment. Exc., but needs to be cleaned.	\$50.00
B 253	Coxe (Bronson)	25-2, German silver and Bakelite high-quality freespool levelwind (Exc.) mounted on a rare and neat Bronson - Coxe countertop display.	\$50.00
B 254	Coxe (Bronson)	25-3, German silver and Bakelite high-quality freespool levelwind, balsa wood arbor, with beautiful patina, Exc.+	\$20.00
B 255	Coxe (Bronson)	25-3, German silver and Bakelite high-quality freespool levelwind, VG+ to Exc.- but will likely clean up to Exc.	\$15.00

Lot #	Manufacturer	Description	Opening Bid
B 256	Coxe (Bronson)	25-C, German silver and Bakelite, high-quality freespool levelwind with aluminum spool and cork arbor. Exc.-	\$20.00
B 257	Coxe (Bronson)	Coxe Coronet 25, aluminum and Bakelite, high-quality freespool levelwind with broad, hollow spool axis. Exc.- (but should clean up to Exc.+)	\$15.00
B 258	Coxe (Bronson)	Bronson Coronet 25, aluminum and Bakelite, high-quality freespool levelwind. Exc.- (but should clean up to Exc.+) in gold-stamped Bronson-labeled case.	\$20.00
B 259	Coxe (Bronson)	Coxe Coronet 25N, aluminum and Bakelite, narrow spool, high-quality freespool levelwind with broad, hollow spool axis. Exc.+ (seems absolutely perfect!) in correct Coxe-pressed stamp leather case.	\$30.00
B 260	Coxe (Bronson)	30-C maroon lightweight levelwind in crisp original box with papers. Tough to grade. Reel looks crisp except heavy line residue on reel spool arbor. Runs stiff. A good cleaning should make this look and work new again.	\$10.00
B 261	Coxe (Bronson)	60-C, nice nickel-plated brass levelwind, with very light wear (Exc.) in crisp box with papers.	\$20.00
B 262	Coxe (Bronson)	Both versions (2 reels) of the scarce 94-C. The early black version appears perfect except for some light line marks on the spool (Exc.). The aqua-blue versions has light wear (VG+) but displays very well.	\$40.00
B 263	Coxe (Bronson)	Bronson Coxe saltwater reel collection (10 reels): includes Do-All Model 65C, 315L, 325, 625, 630, 1115L, 1215, 1315L, 1415L (two of these). Pretty reels, some scarce, with all in at least Exc., most in Exc.+	\$75.00
B 264	Bronson	Brooklure Precisionbilt - top-of-the line Bronson trade reel sold by Spiegel's, German silver anti-backlash levelwind, smooth as silk, "41" on foot (1941 manufacture), Exc.-	\$20.00
JM 265	Bronson	United States Penn, early and scarce Bronson trade levelwind, this one equivalent to the Bronson 1800 Lion, with green wooden handle knobs, in VG	\$10.00
B 266	Bronson	Reel lot (6 reels), includes: Veteran 1000 (Exc.), Meadowbrook 312-3460 (ornately engraved trade reel for Sears, in Exc.-), Brooklure No. 25 (another ornately engraved trade reel for Sears, in Exc.-), H-I Silver King (Bronson/Coxe 65C Do/All branded for Horricks Ibbotson, in Exc+) Bronson/Coxe 10-2 in Fair, and a Bronson-Coxe 60 in Good.	\$25.00
B 267	Ted Williams	Two top-end Sears reels: Model 535.311520 (Shakespeare President equivalent in Exc+) and a freespool, star drag Model 535.38490 (looks like a Bronson Invader 26 on steroids, in a strong Exc.)	\$25.00
B 268	Bronson	Lot of five (5) nice Bronson trade reels including: J.C. Higgins 400 (high quality levelwind in Exc+), J.C. Higgins 537.31010 with nice matte finish and great engraved fishing scenes, in Exc., Wards Precision Model 40 (ornately engraved) in Exc.-, Wards Precision Model 10 (ornately engraved) in VG+, and Wards Sport King No 60-6310, Model 5B (ornately engraved) in VG	\$25.00

Lot #	Manufacturer	Description	Opening Bid
B 269	Redifor-Shakespeare	Beetzel: Seems to be transitional between the two companies with neither company name marked. Faceplate has large fish logo, similar to Washington D.C. Beetzel's. Patent dates through 1918. Works beautifully, very solid VG+ with just very minor plating wear.	\$75.00
B 270	Abbey & Imbrie	Thisbe: Shakespeare-made upper-end reel, equivalent to the Professional, with levelwind, jeweled bearings, rolling click and drag in black spacers in face- and tailplate. Beautifully engraved with leaping dolphins on the tailplate.	\$20.00
B 271	Lou Eppinger	No-Tangle Freespool: Aluminum levelwind with jeweled end caps. Upper-end reel by the spoon-meister. Bit scarce. Just a little dirty, but still Exc., in leather pouch	\$20.00
B 272	Marquette	Precisionbilt - Two (2) reels. Neat freespool levelwind with translucent maroon tail and head plates. First one looks great and works perfect most the time, but occasionally binds a bit (may need to be adjusted. We'll call it Exc. with an * Second will clean up well but needs more adjustment (click doesn't completely back off). Can't grade it because I'm not sure how it will repair.	\$20.00
JM 273	Hendrick	Two reels, both unmarked, but both easily identified. First is the classic Mid to late 1880's Whiting and Hendrick raised pillar, recessed gear multiplier with classic early Hendrick foot and swinging arrow click and drag levers on tail plate. Significant (70%) on exterior of face and tailplates, but as mechanically strong an example as you will find. Second is a single action, brass Mascot reel with Hendrick's 1892 patented foot design.	\$20.00
B 274	Spiralwind	Two of these scarce and unusual levelwind reels: TruCast black satin, ornate finish, Exc- in nice correctly-marked leather pouch. Second is a LongCast, would call it a nice VG+ but plastic handle knobs have completely degraded.	\$30.00
B 275	Various	Nice collection of six (6) bay reels, spanning about 70 years: from oldest to youngest: classic hard rubber and no-longer-nickel-plated brass (all plating was polished off) Julius Vom Hofe in #2, other than plating removal, a very nice reel. Montague-made Atlantic Surf Casting, nickel-plated brass and hard rubber non-levelwind, pretty and Exc.- Horricks Ibbotson (UTK reel, after Winchester), raised pillar with sliding clicks and drag on tailplate, a solid VG that will clean up better. Scarce Kalamazoo Tackle Sea Trout 1716 levelwind, looks like it was never used, Exc.+ Garcia (Mitchell) 620 very high quality light saltwater non-levelwind reel with star drag and free spool, sandwiched chrome-plated brass (?) and cream plastic, VG but should clean up to at least Exc.- Garcia Kingfisher GK-60, freespool levelwind with Star drag, solidly built and pretty reel.	\$30.00
B 276	Various	Three (3) ornately engraved levelwind reels, including Ocean City-made X-pert 40, No. 31575, with early star drag in VG+, Ocean City-made Great Lakes (almost identical to Bronson reel of the same name) in VG+, and Kalamazoo Tackle Challenger 1718, quality and pretty with beautiful swirled handle knobs.	\$10.00

Lot #	Manufacturer	Description	Opening Bid
B 277	Various	Lot of 13 freshwater-sized reels: all look good with mechanics running from great to needing significant work, including Simplicity Reel (Portland, OR-- one of the nice ones), Gulf Reel Company, early and unusual Pequea levelwind with Indian logo, Hendryx raised-pillar 40 yd multiplier, nice Quaker State multiplier, Ranger, 4 Bal Cli reels, including one marked "Shapleigh's", and three Ocean City levelwinds.	\$40.00
B 278	Union Hardware	Four (4) reels, including a 40 yd raised pillar Sunnybrook (VG), Samson tubular frame with faceplate retained by screws (Exc.-) and two Samson's with hinged "trap door" faceplates (VG and VG+)	\$15.00
B 279	Firestone	Unusual promotional reel No. 5642-2, Levelwind, pearl-colored spacer and knobs, jeweled end caps, Exc. in correct box. Made in U.S.A. Has a HI look to it.	\$10.00
B 280	Humphrey's	Three (3) reels. First commercially-successful spincast reel. Incredibly well made. Two (2) No. 3's and a No.4. A complete set and a half for this company. Exc. To Exc+	\$20.00
B 281	Johnson and Zebco	Five (5) reels: Two Johnson Citation 110A's, two Johnson Model 80's, and an early Zebco 44. All VG	\$20.00
B 282	FreLine	Three (3) reels, all early 1950's: Model 10 BC and Model 16, both strong Exc. Also a Model 10 BC missing handle retaining nut	\$10.00
B 283	Various	Two Great Lakes' Holiday 98 Spin cast reels: pick up pin needs adjustment in both reel, otherwise VG to VG+, and a scarce Mansfield Industry's Thor Model 540 in Exc.- (pretty scarce in this condition).	\$10.00
JM 284	Various	Two scarce older reels and one new to fish with: Humpal Spinn-X, scarce multiplying closed-face spinning reel, produced for Weber Lifelike Fly Company in the early 1950s. Aimant, French single-action, nickel plated brass, nonlevelwind, very unusual spool tension control on tail plate, ornate handle knob, replaced handle retaining nut. Appears early (1920s?). Rare. Daiwa 8540 HRL spinning reel, pushbutton spool release, convertible retrieve, med. Fresh/light salt. Appears unused, in correct box with papers	\$15.00
B 285	Montague	St. Louis Casting: German silver, KY-style non-levelwind with sliding click and drag on faceplate. Nice early 2-screw 60 yard Monty. Exc.	\$25.00
B 286	Montague	King Pennell (trademark): German silver, KY-style non-levelwind with sliding click and drag on faceplate. Nice 2-screw Monty in scarce 80 yard size. Pennell's top trade reel. Exc.	\$25.00
B 287	Montague	VL&A Tournament Casting: German silver, KY-style non-levelwind with sliding click and drag on faceplate. Nice 2-screw 60 yard Monty. Exc. Bit dirty, but should clean up to Exc.+	\$20.00
B 288	Montague	Scarce Montague-stamped (with trademark) Offshore 250 yard reel with faceplate-lever anti-reverse, sliding click on tailplate, leather thumb-break, nickel-plated brass. Exc.-	\$15.00

Lot #	Manufacturer	Description	Opening Bid
B 289	Montague	Pennell collection, seven (7) "Pennell"-stamped nickel-plated brass Monty reels (all in VG to VG+) and an early box for a 907N (not in collection), including Special, 60 yd, sliding click on tailplate, drag on faceplate; Keystone, 80 yd, jeweled, sliding click and drag on tailplate; Peerles, 60 yd (but stamped "100"), jeweled, sliding click and drag on tailplate; Eagle, 80 yd "top hat" with sliding click on tailplate; trademarked Model 982, 60 yd, sliding click and drag on tailplate; and two (2) examples of trademarked Model 906, 60 yd, raised pillar, sliding click and drag on tailplate.	\$35.00
B 290	Montague	Five (5) reels in VG+ to Exc, including: raised pillar No. 462, 40 yd, sliding click and drag on tailplate; No. 463, 60 yd, sliding click and drag on tailplate; early 100 yd raised pillar with with hard rubber face cap and sliding click on tailplate; 60 yd Quadruple (No. Q60), with sliding click and drag on tailplate; and Eclipse, 40 yd, with sliding click and drag on tailplate.	\$25.00
B 291	Montague	Eight (8) nice nickel-plated brass non-lebelwind reels, all but one in 60 yd size, including Premier Tournament, jeweled end caps, sliding click on tailplate, drag on faceplate; The Expert Casting Reel, sliding click on tailplate, drag on faceplate; Rainbow (80 yd), sliding click on tailplate, drag on faceplate; Cascade, sliding click and drag on tailplate; VL& A Professional, sliding click and drag on tailplate; Abbey & Imbrie, NY, sliding click and drag on tailplate; Winasigo, sliding click and drag on tailplate; Winner, sliding click and drag on tailplate and sliding ring, levelwind assist. Also includes an unlabeled maroon box for the Abbey and Imbrie	\$40.00
B 292	Montague	Three very early, high quality nickel-plated brass Montague reels, all having thin "intro Pflueger" diameter bearing screws, small font on foot, and early handle and knob design, sliding drag on faceplate and click on tailplate, includes a 80 yd "The Premier Casting Reel" with spectacular tiny clear jeweled end caps, and two versions of Pennell's "The Tournament" reel, one in 60 yd size and one in 80 yd size, stamped 753 on the foot.	\$15.00
B 293	Pflueger	Templar 1419 3/4 (400 yd): second style, hard rubber and German silver, freespool, and star drag, large white torpedo handle knob, Exc.	\$15.00
B 294	Pflueger	Templar 1419 3/4 (400 yd): second style, hard rubber and German silver, freespool, and star drag, replacement but well-made elongate wooden handle knob, Exc.	\$10.00
DH 294A	Pflueger	Templar 1420 (450 yd): first style, hard rubber and German silver, freespool, really cool retractable anti-reverse, Williams star drag, thumb-break. This has all the bells and whistles. Nice patina. VG+ due to light wear on hard rubber.	\$40.00
DH 294B	Pflueger	Pflueger Improved Round Multiplying reel (No 2019 1/2 in 1908 catalog, 450 yd): German silver and hard rubber. Scarce reel in this size! Hairline crack in rubber on tailplate and drag switch has been removed. Otherwise, looks and functions great.	\$40.00

Lot #	Manufacturer	Description	Opening Bid
B 295	Pflueger	Three (3) saltwater reels, all Exc., in rough, correct boxes, including: Sea King, No. 2188; Akerite, No. 2068, and Capital, No. 1988.	\$30.00
B 296	Pflueger	Two (2) Exc+ (unused) saltwater reels in crisp boxes with papers, including Temco, No. 2075 and Capitol, No 1985.	\$40.00
B 297	Pflueger	Three (3) Alpines, includes the scarce 2675F with the upside-down levelwind and two versions of the 2657. All Exc.-	\$30.00
B 298	Pflueger	Four (4) light saltwater reels including Autopla, No 2475S (Exc), Bond Quadruple (early style) with a ventilated spool (looks factory) in VG+, 4-Brothers Sumco, No. 2257 in Exc.-, and 4-Brothers Mohoawk in VG (but should clean up much better.	\$30.00
B 299	Pflueger	Six (6) light saltwater reels including: Norka, No. 1355 (Exc.), Temco (older version) 200 yds (VG), Bond (newer version) (VG+), InterOcean, No. 1885 (VG+), Rocket No. 1355 (Exc.), and Rocket No. 1375 (Exc.).	\$30.00
B 300	Pflueger	Seven varieties of 1960's and 70's Pflueger Supreme freespool reels: including Nos. 1975 (new in correct zippered soft case), 1576 (new in correct zippered soft case, with papers, tools, and parts), 1577 (narrow spool, exc. but with comfo grip and rim), 510 (Exc+), 511 (Exc+ with silver spool), 511 (Exc, with black spool), 611 B (metallic brown narrow spool, Exc+).	\$70.00
B 301	Pflueger	Lot of seven (7) Supremes, including: 1573 with four patents (highly polished, otherwise Exc.), 1573 in box with comfo-rim on TP (VG), two newer 1573s with Cub drag handles (VG and Exc), two 1575 (both with correct soft case, both VG-), 1576 (freespool not functioning, but looks OK)	\$35.00
B 302	Pflueger	Lot of seven (7) Summits, including three (3) varieties of the 1993 (slotted screw with patents on interior of rim, no spare pawl in Exc correct cloth bag; patents on interior of rim with spare pawl; "Patented" and "Pats Pend" on foot [with replaced foot screw and comfo rim on TP], all Exc (except as noted); two (2) varieties of 1993L (Exc and Exc-, different patent notations on feet), two (2) varieties of the 1995 (one with spare pawl, and one lacking [scarce], Exc and Exc-)	\$35.00
B 303	Pflueger	Six (6) varieties of Akron levelwinds, including intro 1893 with single patent date and "Other Patents Pending" on TP (Exc.-), spare pawl model 1893 with six patent numbers on smooth TP (bit scarce, Exc+), green handle 1893 with "B" on foot (Exc.), 1893L with "B" on foot (Exc.), 1894 in correct box (VG+ to Exc-), and 1895 (freespool, VG but should clean up to better).	\$30.00
B 304	Pflueger	Three varieties of the Nobby, including 1963 (Exc in crisp box w/papers), 1960 red Deluxe (Exc) and 1965 red freespool (Exc-)	\$50.00
B 305	Pflueger	Lot of nine (9) freshwater casting reels, including: 1510 Fas-Kast (VG+), two (2) 1893 Akrons with single patent date and "Other Patents Pending" on TP (VG and G), 1895 Akron Freespool (VG), 1914 Freespeed (VG+), two varieties of 1953 Skillkast (Exc and Exc-), 1960 Nobby Deluxe (VG+), and 1963 Nobby (Exc-)	\$30.00

Lot #	Manufacturer	Description	Opening Bid
B 306	Pflueger	Nice lot of five (5) 4 Brothers non-levelwind reels, including: Regal (60 yd, jeweled end caps, 3 and 9 oclock screws on FP, 1907 and 1922 [not typo, 1922] patent dates on TP, Exc), Regal (60 yd, unjeweled, 2 and 8 oclock screws on FP, 1907 and 1923 patent dates on TP, G+), bit scarce Regal (80 yd, jeweled end caps, 3 and 9 oclock screws on FP, 1907 and 1923 patent dates on TP, Exc) , Elinor (60 yd, unjeweled end caps), Congress No 1 1/2 (a trade version of the Elinor for Supplie Hrdwr, all plating is polished off, but it's pretty in a strange sort of way).	\$40.00
B 307	Pflueger	Five (5) non-levelwinds, including 4 Brothers Sentries (pre-1924) 40 yd, unjeweled end caps (Exc-), Portage Niftee (Exc), Portage Niftee (G), Portage Atlas 60 yd (Exc), Portage Atlas 80 yd (VG+), and Portage Sentries 80 yds (plating is removed and is shiny, shiny brass).	\$20.00
B 308	Pflueger	Five (4) varieties of early (pre-1914?) raised pillar reels, including: pre-1906 Model 162 (40 yd, Exc-), Model 172 (hard rubber cap, 40 yd, VG), 162 (40 yd, VG), Ajax (a trade 162, made for Hibbard, Spencer, Bartlett & Co., VG+), and 163 (60 yd, VG). Great lot to explore early evolution of Pflueger reel hardware and design!	\$25.00
B 309	Pflueger	Freespeed, No. 1914, 100 yd nonlevelwind, freespool, Exc-	\$20.00
B 310	Pflueger	Pflueger Capital (first version w/ bulldog logo), hard rubber and nickel-plated brass, nonlevelwind, Exc-	\$20.00
JM 311	Pflueger	Two (2) reels: Buckeye, 60 yd, jeweled inset end caps, Kentucky-style 1907 and 1923 patents on TP, VG+. Trusty 1923 lime green levelwind, Exc-.	\$25.00
B 312	Pflueger	Buckeye, 60 yd, jeweled inset end caps, Kentucky-style 1907 and 1923 patents on TP, solid Exc.	\$25.00
B 313	Pflueger	Worth, 60 yd, German silver, jeweled inset end caps, fancy handle knob, Kentucky-style 1907 and 1914 patents on TP, serial # 3058, Exc to Exc+. Great condition for this scarce, high quality reel!	\$50.00
B 314	Pflueger	Redifor, German silver, jeweled inset end caps, perfect ridged early celluloid handle knob (like first model Supreme) on counter-balanced handle. 1907, 1908, and 1914 patents on TP, serial # 17,568, crack in faceplate endcap jewel is only flaw. Exc	\$50.00
DH 315	Pflueger	Redifor (early!), German silver, jeweled inset end caps, perfect smooth amber-colored early celluloid handle knob (like on some of the first model Supreme) on counter-balanced handle. Faceplate is marked like pre-bulldog logo reels, with small bulldog trademark logo added below handle, at 6 oclock. 1907, 1908, and 1914 patents on TP, serial # 2,019, Likely a 1914 or 1915 reel. Exc to Exc+	\$75.00
DH 316	Pflueger	Pflueger Quadruple (marked in arc on faceplate), nickel-plated brass, sliding click and drag on tailplate. Pre-bulldog logo. Model #953J Exc.-	\$25.00

Lot #	Manufacturer	Description	Opening Bid
B 317	Shakespeare	Nice small Service Reel collection of three (3) varieties of this bay-weight reel, including 1944 (standard spool width), Model GK (1940) absolutely perfect in similar condition correct orange box; Model 1946M (wide spool), Model FE (1956) also in nearly perfect condition in very nice correct red, white, and blue box; and scarce 1941 Free Spool Service reel, Model EJ (1961), black, large teardrop-shape with handle-centered push-button freespool and star drag, has line on it, but perfect (Exc+).	\$45.00
B 318	Shakespeare	Executive Free Spool, No. 1992, Model QU (1962), teardrop-shape with handle-centered push-button freespool and star drag, Exc. (very small rub on tailplate, but unused) in nice grey zippered, correctly marked soft case.	\$15.00
B 319	Shakespeare	Presidential Sportcast, Model EF (1965), scarce and pretty black and gold anodized teardrop shaped lightweight levelwind. This was one a top-of-the line non-freespool freshwater reel. Exc+	\$15.00
B 320	Shakespeare	Perfect, 25051, 1924 Model, German silver nonlevelwind, patina, Exc	\$20.00
B 321	Shakespeare	Tournament Free Spool, 1740, Model HE (1936), jeweled end caps, large cork arbor and aluminum handle, Exc.-	\$20.00
B 322	Shakespeare	Tournament, 23043, 1914 Model, aluminum with unusual inset non-jeweled end caps and aluminum full-length handle with unusual tournament-style grasps/knobs, hollow aluminum spool arbor. Exc.-	\$30.00
B 323	Shakespeare	Tournament, 1922 Model, jeweled end caps, cork arbor, Exc-	\$20.00
B 324	Shakespeare	Tournament Free Spool, 1740, Model FK (1950), German silver, jeweled end caps, large cork arbor and tiny three-arm aluminum handle, Exc+	\$30.00
B 325	Shakespeare	Marhoff 1964, Model GE (1946), narrow spool, light weight (appears factory made), scarce, VG+ (due to anodized rubs on edge of faceplate, otherwise very nice)	\$30.00
B 326	Shakespeare	Free Spool Sportcast, No. 1982, Model EJ (1961) teardrop-shape with handle-centered push-button freespool and star drag and maroon-colored spool.	\$15.00
B 327	Shakespeare	Criterion, 1961, Model GA (1940), highly engraved on faceplate, tailplate, and handle. Best example, I've ever seen, in this condition. For the collector who appreciates the absolute finest example of an attractive reel. Exc+	\$25.00
B 328	Shakespeare	Professional, No. 3M, jeweled end caps, Patents Applied For (very early). Exc.	\$60.00
B 329	Shakespeare	Surf Tournament, 1756, Model HC (1938), German silver, double rubber spacer, cork arbor, jeweled end caps, long spool, Exc+	\$40.00
B 330	Shakespeare	Sportcast, 1973, Model HC (1938), aluminum, jeweled end caps, has line on it, but perfect (Exc+) , in crisp correct box.	\$30.00
B 331	Shakespeare	Meter Reel, 1940, Model HE (1936), scarce upper-end freshwater levelwind that tracked amount of line released. VG+ due to minor plating flaking and pitting (not easily noticeable, displays very well)	\$25.00
B 332	Shakespeare	Level Wind Reel, Style B, No. 3, 60 yd., Patented, low serial number (1382), Exc-. Great early example!	\$50.00

Lot #	Manufacturer	Description	Opening Bid
B 333	Shakespeare	Beetzel, Model 26 (1926), German silver, dropping levelwind, jeweled end caps, three patent dates on tailplate. Exc.	\$40.00
B 334	Shakespeare	Pair (2) of high quality early freespool reels, including Surf Tournament, 1756, Model HC (1938), German silver, double rubber spacer, cork arbor, jeweled end caps, long spool, Exc; and Standard Professional Free Spool 1755, 1924 Model, 150 yds, similar design and construction as the first reel, but with top crossbar.	\$50.00
B 335	Shakespeare	Great collection of eight (8) different versions of the Marhoff, 1964, including (youngest to oldest): 1) Model GE (1946): medium green anodized, sliding click on TP. 2) Model GE (1946): Dark green and white swirled FP, sliding click on TP, no antibacklash knob 3) Model GK (1941): dark green anodized, sliding click on TP. 4) Model HD (1937): similar to #2, but black swirl. 5) Model HJ (1932): similar to #4, plus has rim-control drag lever on FP, in correct worn box 6) Model 30: solid black, no drag, sliding click on TP, but "Honor Built" stamp on TP. 7) Model 26: solid black, wheel controlled drag on edge of FP, "Honor Built" stamp on TP. 8) Model 1914: similar to 7, but no stamp on TP. 1 & 2 are VG, others Exc- or better.	\$40.00
B 336	Shakespeare	Round-body levelwind collection (24 different reels), including: 1) Wondereel 1920, Model FH (1953) Exc. 2) Light Wondereel 1921, Model GE (1956) in Exc. 3) Wondereel DeLuxe 1922, Model FH (1953) in Exc-. 4) Triumph, 1958, Model 26 in Exc-. 5) Intrinsic 1959, Model HE (1936) in VG+. 6) Intrinsic 1959, Model 31 (1931) in VG-. 7) Criterion 1960, 1924 Model new (Exc+) in crisp grey box with wrench in original labeled envelope. 8) Criterion 1960, Model 26 (1926) in VG+. 9) Criterion 1960, Model HD (1937) in VG+. 10) Ideal Levelwind, Model 26 (1926) in Exc. 11) Criterion 1961, Model HC (1938), great engraved fishin' scene, in Exc. 12) Superior Levelwind 1962, Model 26 (1926), in Exc. 13) Superior Kalamazoo 1962, Model 31 (1931) in Exc. 14) Superior Kalamazoo 1962, Model HD (1937) in Exc+. 15) Ideal 1963, Model 31 (1931) in Exc. 16) Black King (a rare trade version of the Ideal 1963, but with black instead of burl spacer, from early 1930s) in Exc-. 17) Ideal 1963, Model HE (1936) with rough gear, otherwise Exc. 18) Marhoff 1964, Model 26 (1926) in VG+. 19) Marhoff 1964, Model HJ (1932) in VG+. 20) Shakespeare President, Model GK (1941) in Exc-. 21) Classic 1972, Model 1926 (according to foot, identical to 1930 vintage), Exc-. 22) Classic 1972, Model HE (1936, last year of FP drag lever) Exc-. 23) Classic 1972, Model HD (1937) in Exc-. 24) Classic 1972, Model GK (1941, green anodized version) in Exc-.	\$75.00

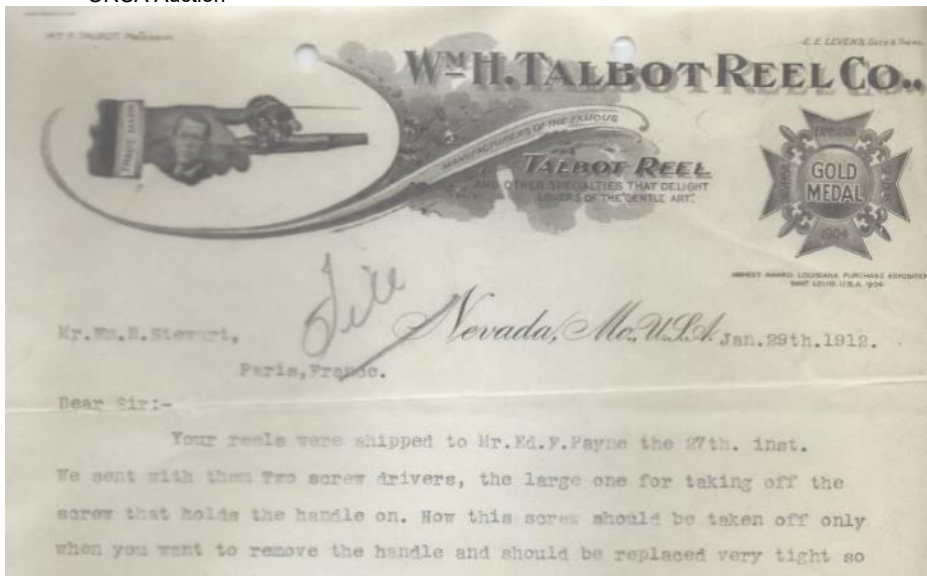
Lot #	Manufacturer	Description	Opening Bid
B 337	Shakespeare	Collection of six (6) different Professional Levelwinds 1965: 1) Model 1912, German silver and black hard rubber spacers, pretty nice but two hairline cracks in hard rubber spacers and needs to be cleaned; click not working (needs adjustment), nicely engraved "A. F. Frankhouser, M.D." on faceplate 2) Model 1924, German silver and black hard rubber spacers, with ornate fishing scene engraving, click needs adjustment (sometimes works), otherwise Exc. 3) Model HC (1938), aluminum alloy with gray swirled spacers, has drag wheel under handle and swinging click lever on tailplate, VG+. 4) Model GK (1941), green anodized aluminum with marbled white plastic spacers, antibacklash adjustment on faceplate, standard click on tailplate, VG+. 5) Model RV (1951), German silver with cream plastic spacers, no antibacklash adjustment, standard click on tailplate, Exc.-. 6) Model FK (1951), German silver with cream plastic spacers, antibacklash adjustment on tailplate, standard click on tailplate, Exc. in correct box with papers.	\$75.00
B 338	Shakespeare	Three (3) varieties of nonlevel Service reels: 1) scarce 43042 (150 yd) 1912 Model, inset jeweled endcaps, strong VG+ 2) 13042 (60 yd) 1914 Model, with different style of inset endcaps VG to VG+ 3) 13042 (60 yd), 1918 Model, with standard endcaps in leather case.	\$30.00
B 339	Shakespeare	Two (2) Universals: 1) early (1906?) No. 2 80 Yd Quad, VG. 2) 23038 (100 yd), 1910 model, VG. Both look good and function well. Minor plating wear.	\$40.00
B 340	Shakespeare	Six (6) varieties of the President (Shakespeare's top freshwater casting reel) and related reels: 1) 1970 round-body, Model GK (1941), stainless steel, anti-backlash control on faceplate, Exc in nice marked leather case. 2) 1970 teardrop body Model GD (1947), stainless steel, anti-backlash on faceplate, Exc. 3) 1970 teardrop body Model FK (1951), stainless steel, anti-backlash integrated into faceplate end cap, Exc- 4) 1970A teardrop body Model FH (1953), green anodized aluminum, VG+ 5) 1978 Tru-Axis President Model EA (1960), anti-backlash knob on faceplate, aluminum, Exc in gray synthetic leather zippered soft case. 6) 1962 Free Spool Executive, Model EJ (1962), star drag, antibacklash, freespool teardrop body aluminum in Exc-.	\$40.00
B 341	Shakespeare	Four (4) high quality, early rubber spacer reels, including: 1) Standard 23052 100 yd, 1918 Model, rolling click wheel in TP and drag in FP spacers, strong VG+ 2) Professional 23053 100 yd, 1918 Model, rolling click wheel in TP and drag in FP spacers, Exc 3) Standard Professional 22653, 1910 Model (intro model!) rolling click wheel in TP and drag in FP spacers, inset jeweled end caps, dirty but should clean up to Exc 4) Ideal Levelwine 1963 (1922 Model), rolling click in FP spacer. Great lot!	\$50.00

Lot #	Manufacturer	Description	Opening Bid
B 342	Shakespeare	Five (5) different nice and early non-levelwind take-aparts: 1) scarce Universal Precision 43046, 150 yd, 1922 Model, sliding click on TP, rolling drag wheel in FP edge, strong VG+. 2) Universal Precision 1745, Model HK (1931), sliding click on TP, rolling drag wheel in FP edge, VG+. 3) scarce Criterion 22640, 80 yd, 1910 Model, sliding click on TP, strong VG. 4) Pioneer 23045, 100 yd, Model 26 (1926) sliding click on TP, rolling drag wheel in FP edge, VG. 5) Precision 23041, 100 yd, 1922 Model, sliding click on TP, sliding drag on FP, Exc-	\$40.00
B 343	Shakespeare	Eight (8) different varieties of Sportcast reels: 1) Sportcast 1973, Model GA (1940), round green anodized aluminum, VG+. 2) Sportcast 1973, Model FK (1951), teardrop green anodized aluminum, VG+. 3) Sportcast 1973A, Model EH (1963) teardrop gold anodized aluminum, Exc+ in crisp box w/ papers. 4) Direct Drive Sportcast 1973D, Model FK (1951), teardrop green anodized aluminum. 5) Direct Drive Sportcast 1973D, Model FB (1959), teardrop satin aluminum. 6) Standard Sportcast 1977, Model GD (1947), round body, nickel-plated brass with white plastic headplate spacer, Exc-. 7) Professional Sportcast 1980, Model GK (1941), round body, stainless steel with white plastic headplate spacer with great engraved leaping bass on TP, Exc. 8) Free Spool Sportcast 1982, Mk-1, Model EJ (1962), teardrop body star drag, sliding click VG	\$40.00
B 344	Shakespeare	Six (6) levelwinds, including: Superior Levelwind 1962 (1924 Model) VG+. Two (2) Criterion Level-Winding 1960 (Model 26), VG to VG+. Criterion Level-Winding 1960 (similar to Model 26, but only marked "Patented" and "Made in USA" on foot), VG+. Criterion Level-Winding 1960 (Model 31). Criterion Level-Winding 1960 (Model HD [1937]), VG+	\$25.00
B 345	Shakespeare	Three (3) teardrop reels, all with star drag: 1) Free Spool Direct Drive 1937, Model QU (1962) copper-anodized aluminum, some wear to anodized finish but otherwise looks unused, so VG+ in nice box w/ papers. 2) Tru-Axis President 1976, Model EA (1960) Exc. 3) Free Spool Executive 1992, Model QU (1962) VG+	\$20.00

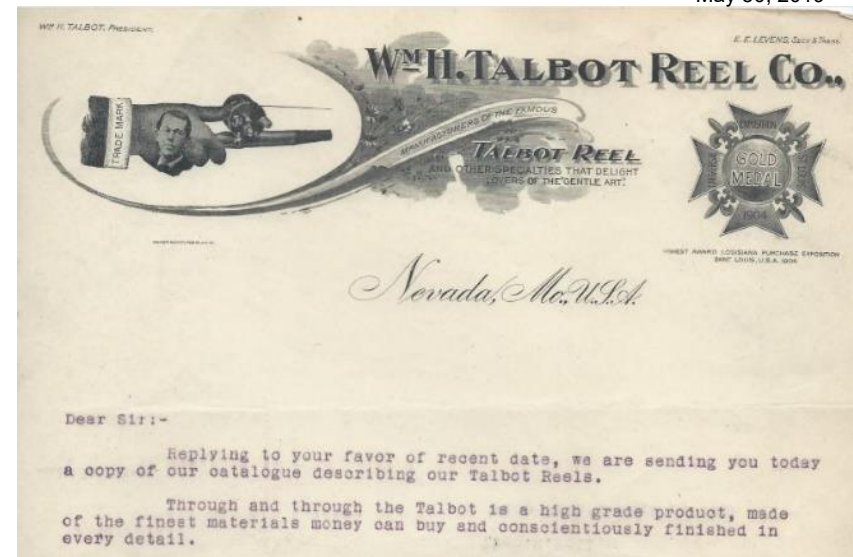
Lot #	Manufacturer	Description	Opening Bid
B 346	Shakespeare	Great starter collection of 20 freshwater casting reels (6 nonlevelwinds and 14 levelwinds). Nonlevelwinds include: 1) Standard Professional 22633, 1910 Model (intro of their top reel), click not working, otherwise Exc-. 2) Service 13042, 1914 Model, Exc-. 3) Standard 23052, 1922 Model, VG. 4) Service 23042, 1914 Model, Exc. 5) Service 23042, 1924 Model, VG+. 6) Leader, early fancy jeweled end caps version. Levelwinds include: 1) Professional 1965, Model FK (1951) Exc. 2) Ideal 1963, Model 26 (1926), Exc-. 3) Superior Kalamazoo 1962, Model 1922, Exc. 4) Superior Kalamazoo 1962, Model 1922, VG+. 5) Superior Kalamazoo 1962, Model 31 (1931), VG. 6) Superior Kalamazoo 1962, Model 32 (1932), G. 7) Light Wondereel 1921, Model GK (1941). 8) Sportcast 1973, Model GE (1946), VG to VG+. 9) Sportcast 1973, Model GE (1946), VG to VG+. 10) Standard Sportcast 1977, Model GJ (1942), Exc-. 11) President 1970A, Model FH (1953), VG. 12) Tru-Axis President 1976, Model EA (1960), Exc-. 13) Direct Drive Sportcast 1973A, Model EH (1963), Exc. 14) Sportcast 1973, Model FK (1951), Exc-.	\$50.00
B 347	Shakespeare	Five (5) bay reels, including: 1) Service 1944, Model GE (1946), Exc+, 2) Hercules 1966, German silver, Exc 3) Hercules 1966 ¹ / ₂ , German silver, Exc. 4) Champion 1967, VG. 5) Jupiter 2212, German silver, VG.	\$25.00
B 348	Shakespeare & Heddon	Clint Eastwood Lot (The Good, The Bad, and The Ugly) - 11 reels. The Good: 1) Shakespeare Hydrofilm Control 1930, Model EE (1966), VG but should clean up to Exc. 2) Leader (no model #), VG=. 3) Direct Drive 1950, Model EH (1963), VG+, 4) Direct Drive 1950, Model ED (1967) with star drag, Exc-, 5) Glaskyd Service 2030, Model FF (1955) free spool, star drag, bit scarce Exc 6) Star Drag, Pushbutton Wonder Cast 1793, Model QU (1962), nice spincast, Exc-. 7) Heddon Convertible 180 (spincast, early 1960's), VG+. The Bad (both have wrong handles and don't function correctly because of this; otherwise the reels would be great!): 1) Direct Drive Glaskyd 2060, Model FF (1955). 2) Direct Drive 1950, Model ED (1967). The Ugly (both have handle knobs that have disintegrated, otherwise nice): 1) bit scarce Cast or Spin Wondereel 1770, Model FF (1955). 2) President 1970, Model FK (1951).	\$20.00
B 349	Shakespeare Inglis	Four (4) Canadian Shakespeare reels, made in the John Inglis factory: 3 examples of the Ultra 1984, Model GE (1946), ranging from VG to Exc- and a Supereel 1920 (same as the U.S. Wondereel), Model GE in Exc.	\$10.00
DH 350	Abu Record	Record 1500 Levelwind, Phase I to II transitional. Circa 1943. VG+	\$20.00
DH 351	Abu Record	Record 1600 Levelwind, Phase I, clear jewels, "Made in Sweden" on faceplate, "WD" in diamond on tailplate. Lime green handles. VG+ Circa 1941. Early and scarce!	\$30.00
DH 352	Abu Record	Record 1700 Levelwind, Phase I to II transitional. Circa 1943. Exc.	\$20.00
DH 353	Abu Record	Record 1800 Levelwind, another nice Phase I to II transitional reel, this one with beautiful blue jewels. VG+.	\$30.00
DH 354	Abu Record	Record 1300 Levelwind, hammered light green finish with green mottled handle knobs. "Record" "Made in Sweden" and "17390" stamped on foot. Mid to late 1950s? Pretty. Exc.	\$20.00

Lot #	Manufacturer	Description	Opening Bid
DH 355	Abu Record	Record 2300 nonlevelwind, freespool tournament reel. 3rd version. Circa 1960. Exc to Exc +	\$40.00
DH 356	Record	Record 500 spinning reel. The Swiss-made 5th version of this reel, with half pail Mechanically solid but moderate paint loss. Circa 1950s.	\$10.00
DH 357	Abu Record	Record 600 spinning reel. Set up for left-hand retrieve; very unusual. Moderate paint wear but mechanically solid. Circa 1952	\$10.00
DH 358	Thommen Record	Two versions of the Thommen Record 400 spinning reel. The 400-5 looks unfished and is about perfect. The 400-7 has some paint wear, especially on the cool-looking drag fins.	\$10.00
DH 359	Julius Vom Hofe	B-Ocean 4/0. All the bells in whistles in this high-quality ocean reel, marketed to go head-to-head with his brother's wares. In Exc in a nice JVH B-Ocean case for a 6/0 reel.	\$100.00
DH 360	Edward Vom Hofe	550, 3/0. German silver and hard rubber. Exc.	\$100.00
DH 361	Edward Vom Hofe	621, 3/0. German silver and hard rubber. Exc.	\$100.00
DH 362	Edward Vom Hofe	621, 4/0. German silver and hard rubber. Exc.	\$100.00
DH 363	Edward Vom Hofe	621, 6/0. German silver and hard rubber. Exc.	\$100.00
DH 364	Orvis	100 - high quality black spinning reel, full bail, Exc- to Exc	\$30.00
DH 365	Orvis	150A - high quality black spinning reel, full bail, Exc.	\$30.00
DH 366	Fin Nor	Gar Wood Jr. 3 light saltwater spinning reel. Top quality. Exc-	\$100.00
DH 367	Fin Nor Fly	"Wedding Cake" Gar Wood Jr. No 1 (scarce small size!), serial #136, Exc.	\$500.00
DH 368	Fin Nor Fly	"Wedding Cake" Gar Wood Jr. No. 2, Exc-	\$300.00
DH 369	Fin Nor Fly	Anti Reverse No. 1, double handle, gold anodized, nicely engraved initials and factory-engraved company name, size, and heritage on tailplate, Exc to Exc+	\$100.00
DH 370	Fin Nor Fly	Direct Drive No. 1, counter-balanced handle, gold anodized, with factory-engraved company name, size, and heritage on tailplate. Exc+	\$100.00
DH 371	Fin Nor Fly	Anti Reverse No. 2, double handle, gold anodized, with factory-engraved company name, size, and heritage on tailplate, Exc+	\$100.00
DH 372	Fin Nor Fly	Direct Drive No. 2, counter-balanced handle, gold anodized, with factory-engraved company name, size, and heritage on tailplate, Exc+	\$100.00
DH 373	Fin Nor Fly	Anti Reverse No. 3, double handle, gold anodized, with factory-engraved company name, size, and heritage on tailplate, Exc+	\$100.00
DH 374	Fin Nor Fly	Anti Reverse No. 3, double handle, gold anodized, with "naked" tailplate and small "3" engraved in frame near foot; scarce and early variety of second generation Fin Nor fly reels, Exc to Exc+	\$100.00
DH 375	Fin Nor Fly	Direct Drive No. 3, counter-balanced handle, gold anodized, with factory-engraved company name, size, and heritage on tailplate, Exc+	\$100.00
DH 376	Fin Nor Fly	Direct Drive No. 4, counter-balanced handle, gold anodized, with factory-engraved company name, size, and heritage on tailplate, Exc to Exc+	\$100.00
DH 377	Fin Nor Fly	No. 2, black finish, ventilated spool with front rim exposed, rear drag knob. Marked "FIN NOR 2" on drag knob, no other markings. Nice reel and scarce, with Fin Nor neoprene case that fits. Exc to Exc+	\$100.00

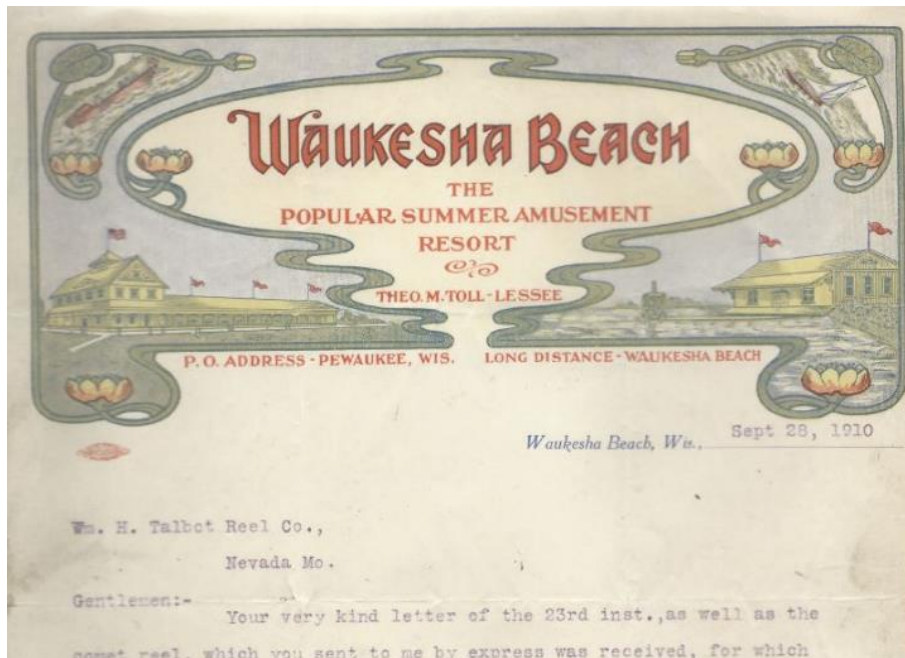
Lot #	Manufacturer	Description	Opening Bid
DH 378	Unknown Fly	Absolutely spectacular late 1800s British ebonite and brass salmon reel with bone handle. Spool is 3 1/8 by 1 5/8 inches. Frame is 3 5/8" diameter. Exc	\$60.00
DH 379	Hardy Fly	Perfect, 3 7/8" wide-drum (their big salmon reel), gun-metal body and smooth brass foot, brass line guide, white handle knob, duplicated Mark II, curved stampings. Likely 1919-20 reel, based on features. VG+	\$100.00
DH 380	Hardy Fly	St. John, 3 7/8", gun-metal finish, ribbed brass foot, curved stampings, 3-screw latch. Likely 1930s. VG+	\$100.00
DH 381	Hardy Fly	St. George, 3 3/4", gun-metal finish, riveted ribbed foot, orange agate line guide, straight line stamping, 3-screw latch. Likely late 1940s. VG+	\$100.00
DH 382	S.E. Bogdan Fly	Unmarked for size but seems to be 0-size (3.25", wide body), 2X multiplier with all the bells and whistles. Has a half-S handle, similar to what he later used on his trout reels. Exceptionally nice. Exc.	\$800.00
DH 383	Abu Record Fly	Standard, in the light green pebbled finish (post-1950), pretty reel that has clearly never been on a rod. Exc+.	\$30.00
DH 384	Horton Meek Fly	No 55, classic gunmetal fly reel with agate line guide. Hardy Uniqua clone. VG	\$30.00
DH 385	Pflueger Fly	Hawkeye, 60 yards, German silver and hard rubber. Stamping is moderately worn, but no other faults are apparent. Exc-	\$75.00
DH 386	Pflueger Fly	Four Brothers Delite, 80 yd, nickel-plated brass and hard rubber, amber handle knob. Good one with just a small spot of brassing. Strong VG+	\$40.00
DH 387	Pflueger Fly	Medalist, 1394, Pat. Pending with sculpted pillar reel arbor, metal hub cover, and one-piece foot (1929 model?). VG to VG+ (very solid for this reel, with about 95% of the finish intact)	\$40.00
DH 388	Pflueger Fly	Medalist 1495, Pat. Pending, Diamolite line guide, metal hub cover, adjustable drag, slotted screws on reel foot. Intro version of this model, circa 1937. VG to VG+ (with 95+% of finish intact)	\$40.00
DH 389	Pflueger Fly	Medalist 1496, Pat. Pending, Diamolite line guide, metal hub cover, adjustable drag, slotted screws on reel foot. Intro version of this model, circa 1937. VG (with about 75% of finish intact) VG	\$40.00



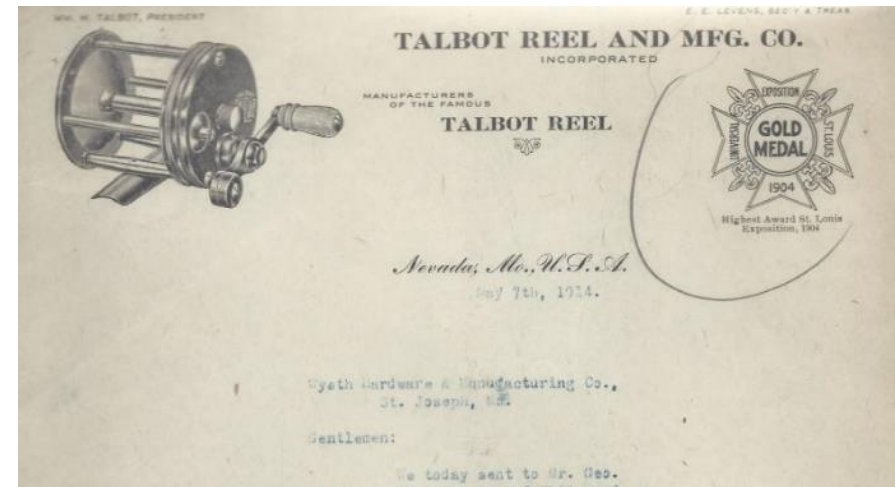
Lot O-1



Lot O-2



Lot O-2



Lot O-3

for 1/2 ounce work our #23 shown on page 12. For quarter ounce work our club special on page 16. We enclose you samples of black and white casti lines @8.00 per thousand yards. We will appreciate an order from you and we will give it our very best attention. We sell our reels in the U. strictly at list prices.

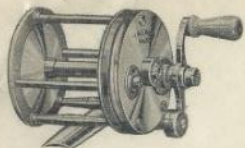
Yours very truly,

Wm. H. Talbot Reel Co.,

Per, *Wm. H. Talbot*

Lot O-4

ALL CLAIMS FOR ALLOWANCE MUST BE MADE ON RECEIPT OF GOODS.



TALBOT REEL & MFG. CO.
(INCORPORATED)
MANUFACTURERS
OF THE FAMOUS
TALBOT FISHING REEL
(HAND MADE)
OFFICE AND FACTORY: 314-316 EAST EIGHTH STREET
KANSAS CITY, MO., U. S. A.

SOLD TO
Wyers Freres,
30 Quai du Louvre,
Paris, France.

July 2, 1914.

TERMS	SHIPPED VIA	YOUR ORDER
30 days from date bill.		
For Five Talbot Reels:		
Style Comet Jewelled	4642	114.00
" Marc "	5873	18.00
" #31 Free Spool	5436	18.60
" #41 With Drag	6579	27.00
" Fly Reel #2	5834	10.00
		101.50
Discount 3-1/3-10%		40.00
Total		60.90

3203

Lot O-6

USTENSILES DE PÊCHE SUPÉRIEURS
Adresse Télégraphique: **HANECON PARIS**

Wyers Frères
FABRICANTS
30 Quai du Louvre **PARIS, 1^{er}**
DIPLOME D'HONNEUR BRUXELLES 1910

Paris le 20 Août 1914

M^r W^m H. TALBOT
NEVADA
Amérique.

Les meilleures Canes à pêche du Monde
sont fabriquées par "WYERS FRÈRES"
(NEW-YORK HERALD, 24 Août 1907)

Dear Sir,

We have for some years been selling Meek reels,
I have made good sales of some, same.

Lot O-6

**PRINTERS:::
PUBLISHERS
EMBOSSERS**

The Henry O. Shepard Co.
212-214 MONROE STREET,
CHICAGO, ILL.

Just

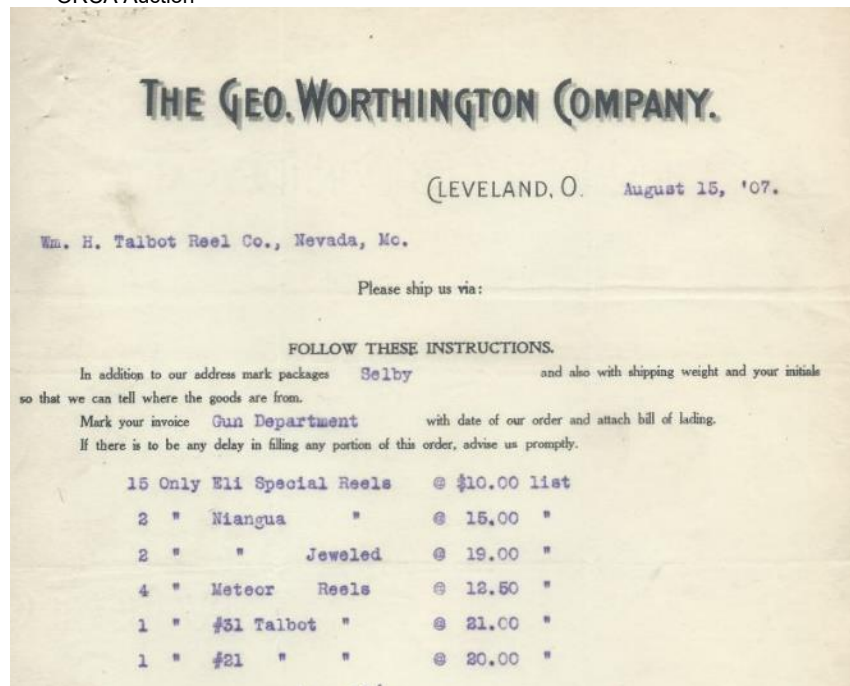
3/15/99

W. H. Talbot, Esq.
Nevada, Mo

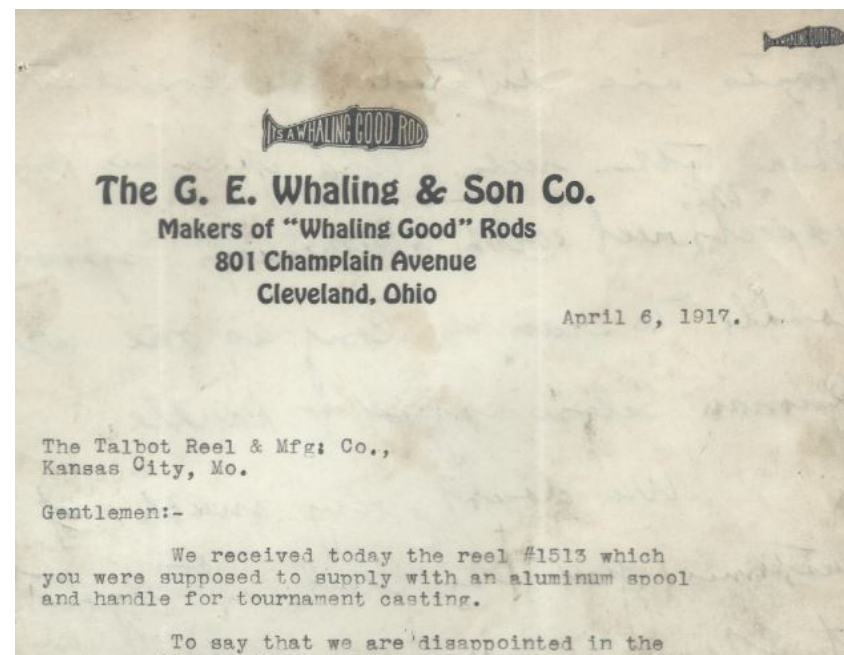
Dear Sir:-

As the season is drawing near when
I can again get out and try my
lot for the summer I want

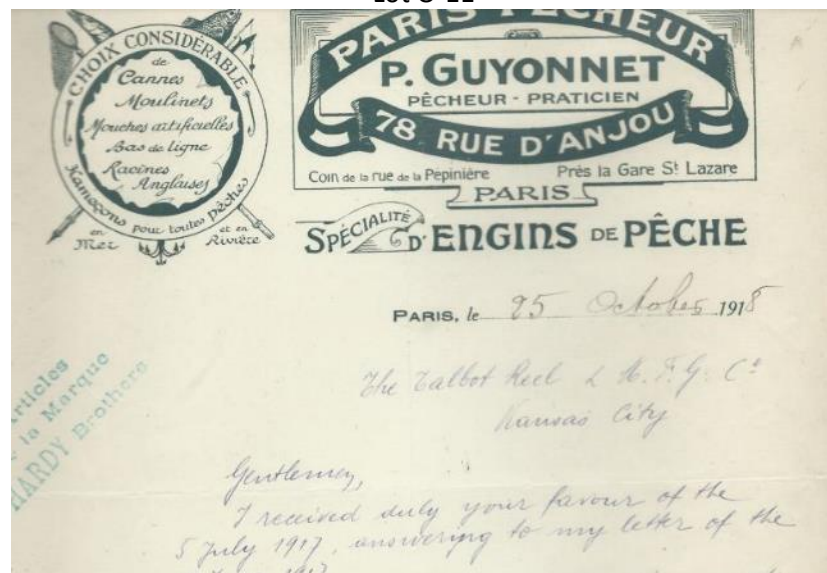
Lot O-10



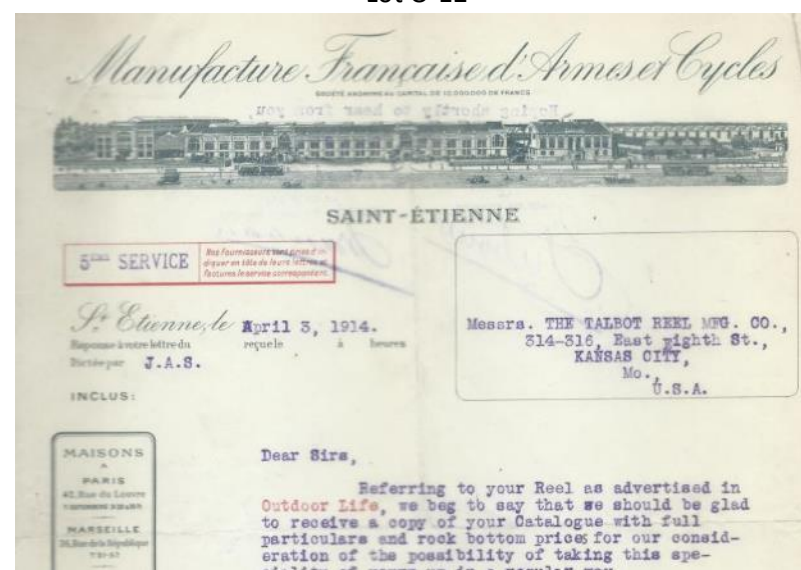
Lot O-11



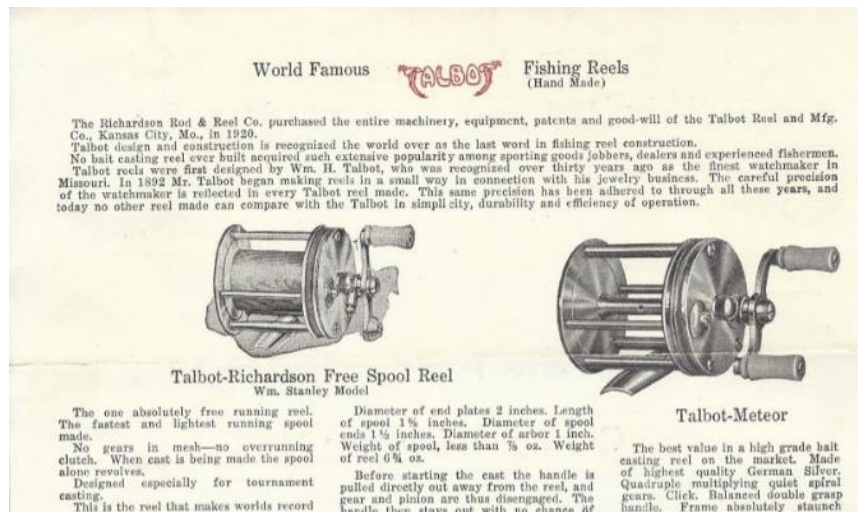
Lot O-12



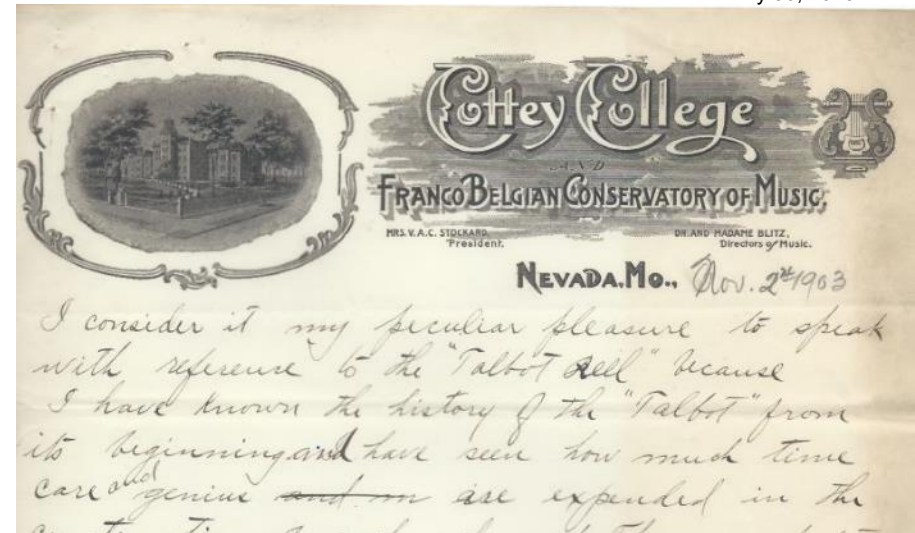
Lot O-13



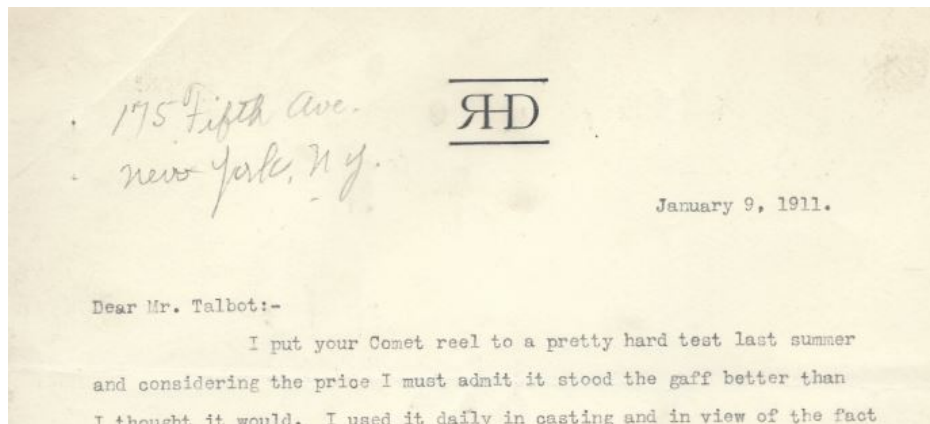
Lot O-14



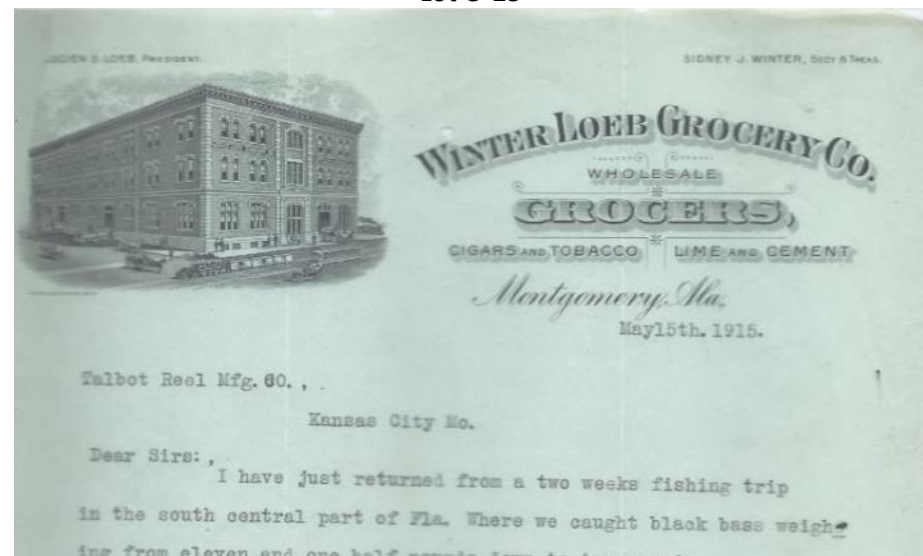
Lot O-23



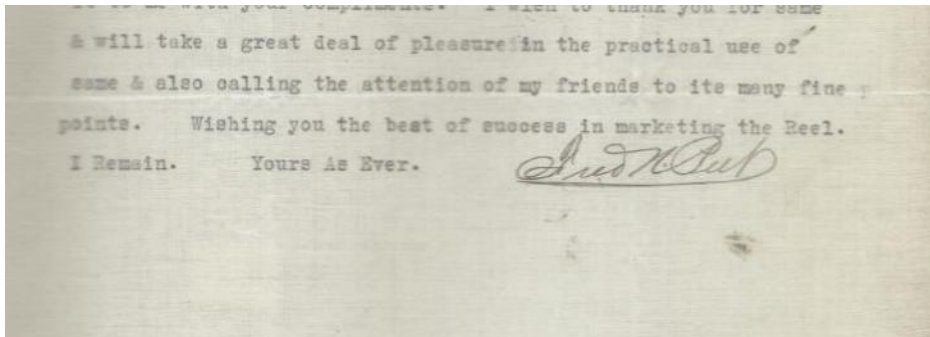
Lot O-25



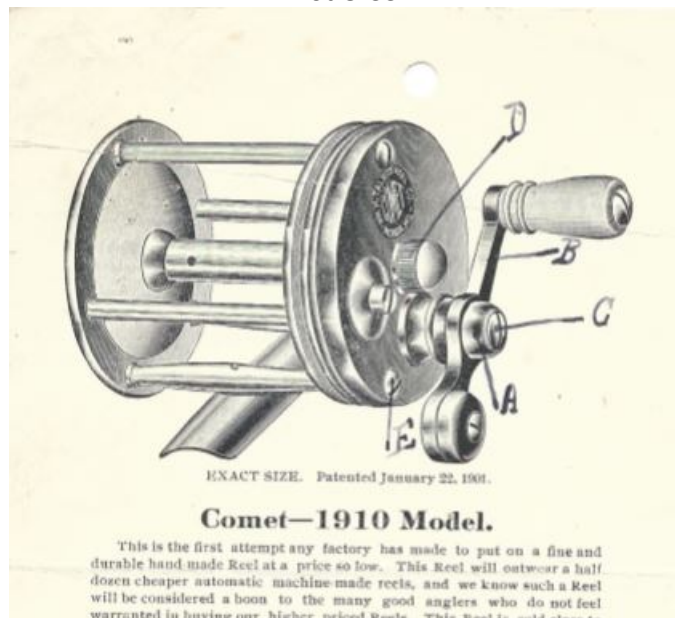
Lot O-27



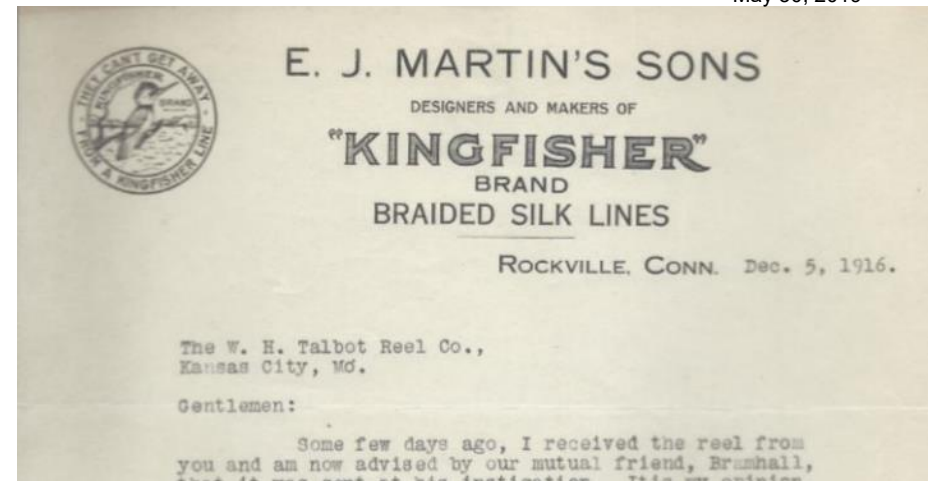
Lot O-31



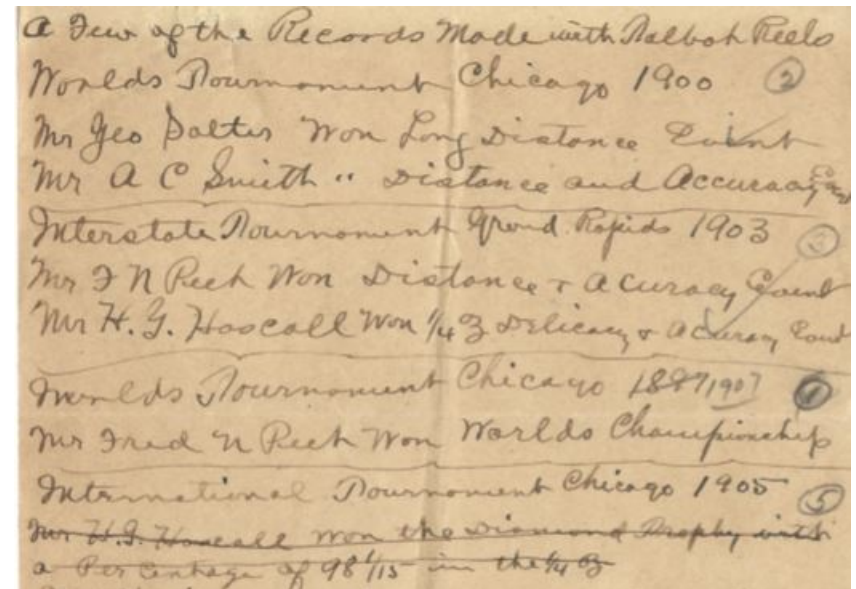
Lot O-33



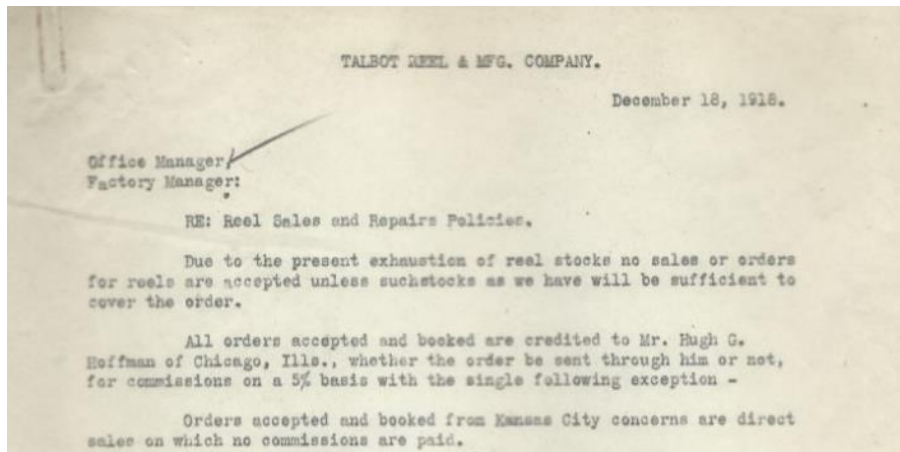
Lot O-44



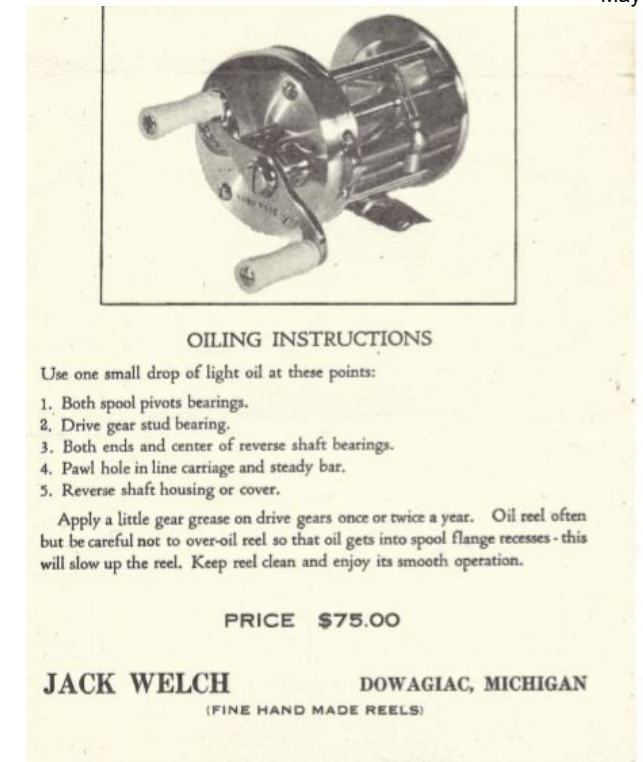
Lot O-36



Lot O-45



Lot O-46



Lot O-47




Lot O-48



Lots O-49

**LATEST MODELS BENJAMIN AIR PISTOLS AND
BENJAMIN AIR RIFLES**

BENJAMIN AIR PISTOLS



BENJAMIN SUPER SINGLE SHOT TARGET PISTOLS are available for shooting either Lead or Steel Air Rifle Shot and Cal. .22 or Cal. .177 Lead Pellets.

NEW STREAMLINED HAND PUMP reduces pumping effort and increases shooting power—will penetrate up to 1/4" in soft pine.

ALL MODELS HAVE THE SAME APPROXIMATE SHOOTING FORCE. For accurate target shooting we recommend No. 132 or No. 137 Benjamin Super Single Shot Target Pistol.

No. 130. BENJAMIN SUPER SINGLE SHOT TARGET PISTOL—smooth bore—for shooting lead or steel air rifle shot and Caliber .177 darts; will group 2" from rest at 10 yards; including one pound BENJAMIN Steel Air Rifle Shot. Domestic shipping weight 4 lbs. Price..... **\$15.00**

No. 132. BENJAMIN SUPER SINGLE SHOT TARGET PISTOL—rifled—for shooting Caliber .22 lead pellets which fit tight in rifled grooves, giving maximum power and accuracy; will group 1" from rest at 10 yards; including 500 Caliber .22 BENJAMIN H-C PELLETS. Domestic shipping weight 4 lbs. Price..... **\$16.65**

No. 137. BENJAMIN SUPER SINGLE SHOT TARGET PISTOL—rifled—for shooting Caliber .177 lead pellets which fit tight in rifled grooves, giving maximum power and accuracy; will group 1" from rest at 10 yards; including 500 Caliber .177 BENJAMIN H-C PELLETS. Domestic shipping weight 3 lbs. Price..... **\$16.20**

No. 160. BENJAMIN SUPER 8-SHOT AIR PISTOL

Lot O-51

ALL CLAIMS for Damages or Deductions must be made within TEN DAYS after receipt of Goods, or they will not be allowed.

Evansville, Ind., Jan 20 1887

Mr. James L. Orr

BOUGHT OF GEO. S. SONNTAG & Co.,

AGENTS FOR
The CHAMBERLIN CARTRIDGE CO.
PARKER SHOT GUNS,
HOWE'S SCALES.

Jobbers of HARDWARE & CUTLERY,

Lot O-52

Manufacturers of
Richardson Steel Fishing Rods

BROOKSIDE	HARRIMAC
PEERLESS	OUR OWN
CHAMPION	I. D. L.
ALL-STAR	CHAMPION
Rods	Nets

RICHARDSON
ROD & REEL CO.
3150 N. Sawyer Ave.
CHICAGO

18

April 17, 1946

Mr. George L. Beck
515 Grand Avenue
Ames, Iowa.

Dear Mr. Beck:

Many things, including the long illness of one of our officers and the hundreds of problems relating to reconversion have caused an accumulation of unanswered letters. Yours being

Sent
4/19/46

Lot O-53

Shakespeare Company
Manufacturers and Importers
Fine Fishing Tackle

KALAMAZOO, MICHIGAN, U.S.A.
April 23, 1923

CABLE ADDRESS
"SHAKESPEARE"
CODES
WESTERN UNION
A.S.C. 5TH EDITION

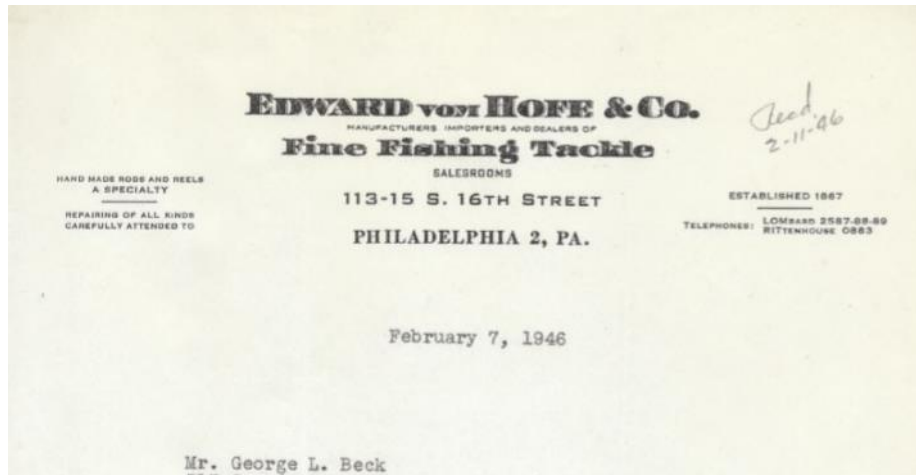
PLEASE REFER TO
Sales DEPT.

Mr. George L. Beck
245 Hyland Avenue
Ames, Iowa

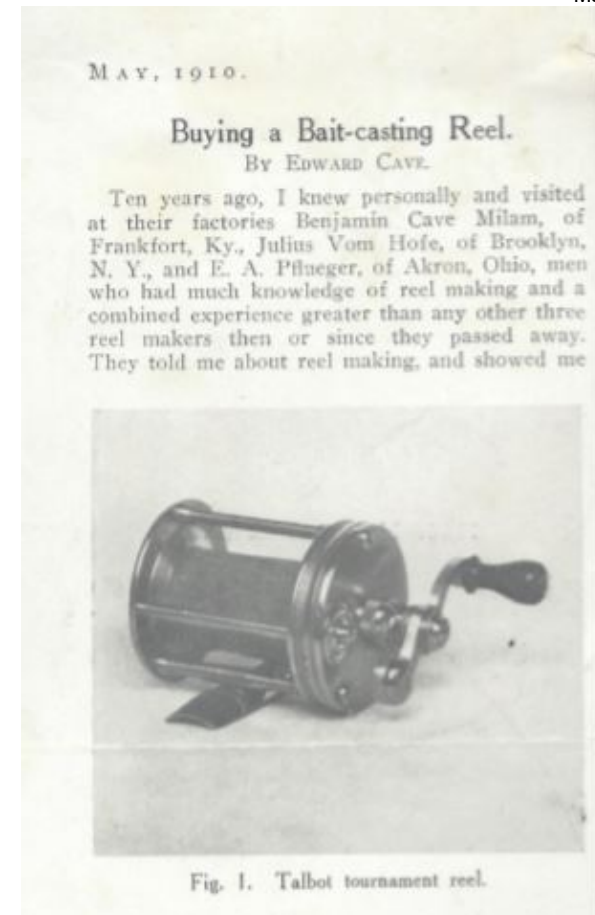
Dear Sir:

Thanks very much for your letter of April 10 and the information that you give. We have read over this letter with a great deal of interest, and at the present time are

Lot O-54



Lot O-58



Lot B-2290-62



Lot B-65



Lots JM-102 and JM-105



Lot JM-103



Lot JM-106



Lot JM-110



Lot JM-119



Lot JM-122



Lots JM-144 and JM-145



Lot JM-153



Lot JM-176



Lot B-180



Lot B-181



Lot B-182



Lot B-183



Lot B-184



Lot B-185



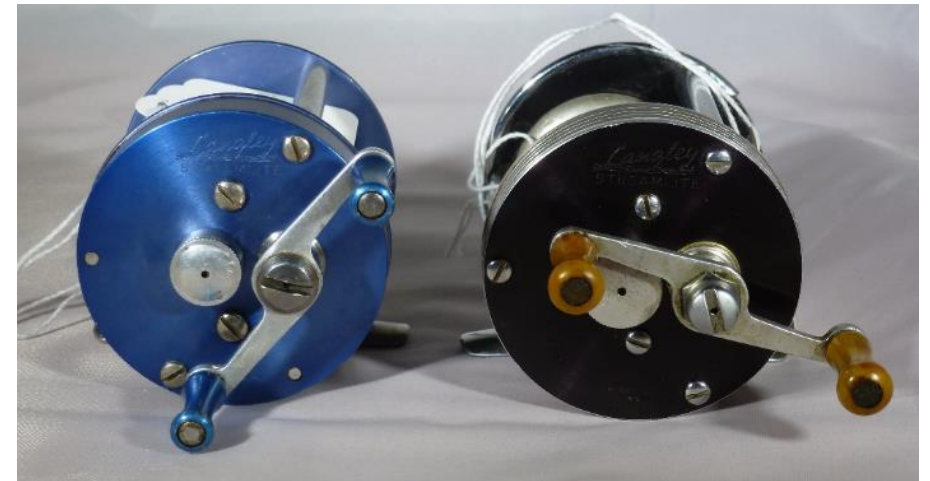
Lot B-194 and Target from Lot B-188 (one of three reels in the lot)



Lot B-189



Shorty from Lot B-187 (left, one of two reels) and Lot B-190



Lot B-198



Lots B-199 and B-200



Lots B-201 and B-202



Lot B-204



Lots B-207 and B-210



Lot B-214



Lot B-215



Lots B-220 and B-218



Lots B-227 and B-220



Lot B-228



Lot B-229



Lots B-231 and B-232



Lot B-236



Lots B-239, JM-237, and B-238 (left to right)



Lots B-241, B-240, and B-242 (left to right)



Lots B-249 and B-251



Lot B-253



Lots B-258 and B-259



Lot B-262



Lot B-267



Lots B-269 and B-270 ("brass" is reflection of Redifor handle)



Lot JM-273



Lot JM-273 (another view)



Lots B-286, B-288, B-255 (left to right back) and B-287 (front)



Lot B-289



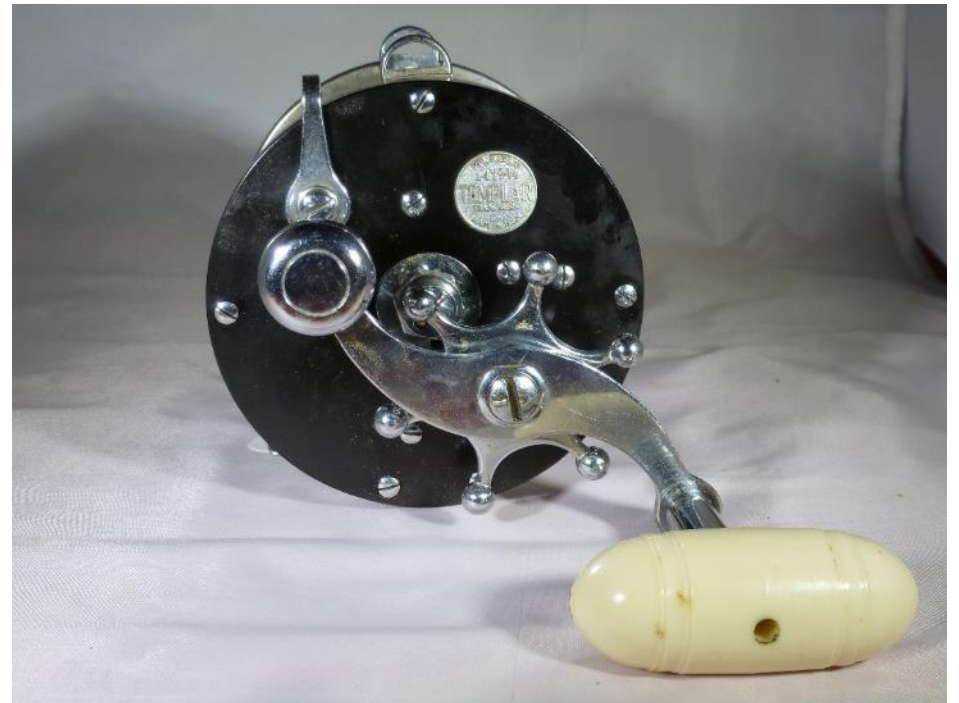
Lot B-290



Lot B-291



Lot B-292



Lot B-293



Lot DH-294A



DH-294B



DH-294B (back)



Lot B-295 (two of three reels in the lot)



Lot B-296



Lot B-300



Lot B-303



Lot B-304



Lot B-306



Lot B-308



Lots B-310 and B-309 (back) and JM-311 (2-reel lot, front)



Lot B-313



Lots B-313 and B-314



Lots DH-315 and DH-316



Lots DH-315 and DH-316



Lot B-317



Lot B-318



Lots B-323 and B-322



Lots B-324 and B-321



Lot B-325



Lot B-326



Lot B-327



Lot B-327 (back)



Lot B-328



Lot B-328 (back)



Lot B-329



Lot B-330



Lot B-331



Lot B-332 (back)



Lot B-333 (back)



Lot B-334



Lot B-337



Lot B-338



Lot B-339



Lot B-340



Lot B-342



Lot B-343



Lot B-345



Lot B-346 (five of 20 reels)



Lot B-346 (five of 20 reels)



Lot B-346 (five of 20 reels)



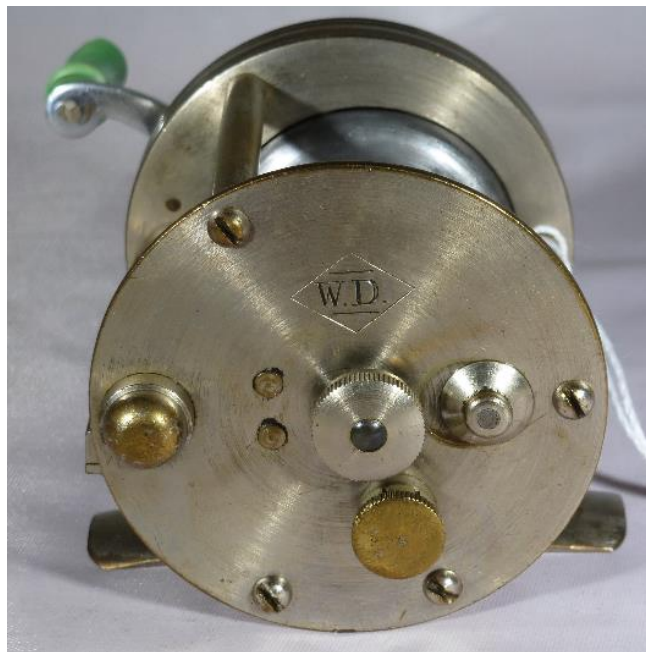
Lot B-346 (five of 20 reels)



DH-350



DH-351



DH-351 (back)



DH-352



DH-353



DH-354



DH-354 (back)



DH-355



DH-356



DH-358



DH-359



DH-360



DH-361



DH-362



DH-363



DH-364



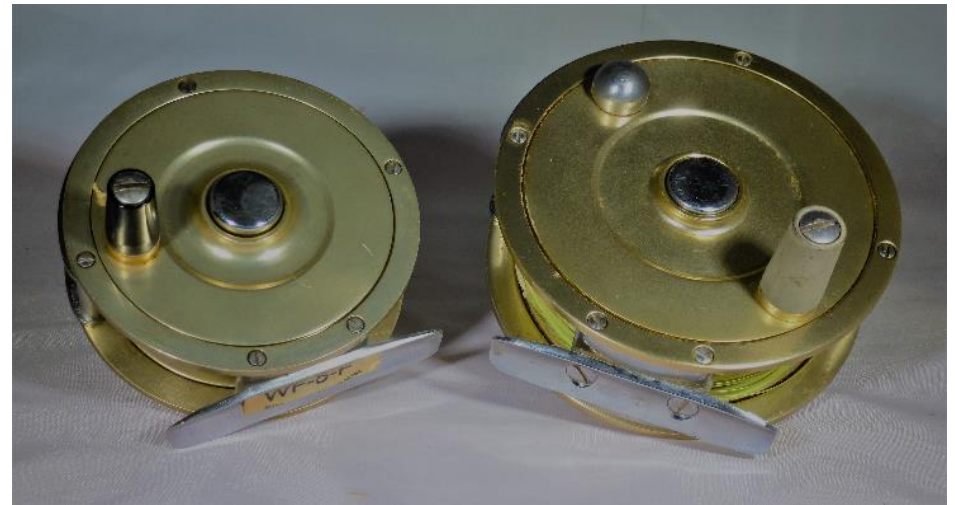
DH-365



DH-366



DH-367 and DH-368



DH-367 and DH-368



DH-369 and DH-370



DH-369 and DH-370



DH-371 and DH-372



DH-371 and DH-372



DH-373, DH-374, and DH-375



DH-373, DH-374, and DH-375



DH-376



DH-376



DH-377



DH-377



DH-378



DH-378



DH-379



DH-380



DH-380



DH-381

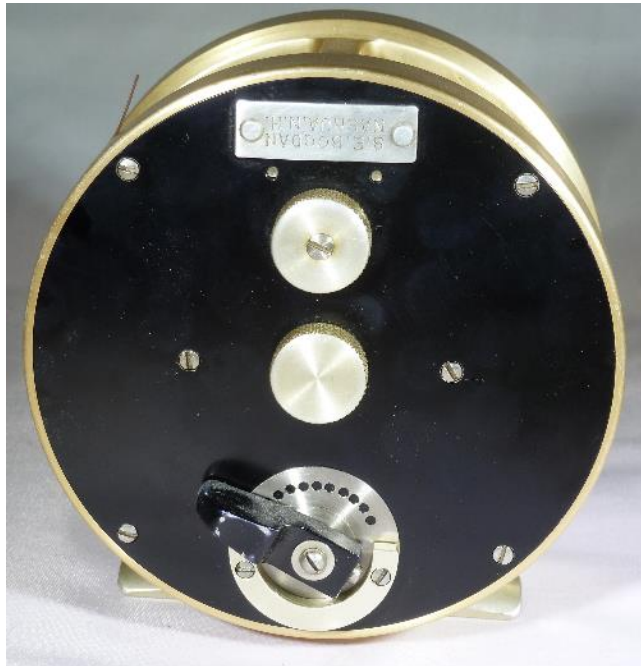


Holiday Inn, City Centre



Tulsa, OK

DH-381



DH-382



DH-382



DH-383



DH-383

DH-384



DH-384



DH-385 and DH-386



DH-385 and 386



DH-387



DH-387



DH-388



1. Print out this form.
2. Fill in all information & your bids.
3. READ THE TERMS.
4. Return by mail (by May 14), email (by May 24), or in person to: David Lehmann, O.R.C.A
Email: davidlehmann0307@gmail.com
Mail/In-Person: Attn: David Lehmann, ORCA, 5206 Westminister Court, Houston, TX 77069

For best results, please submit absentee bids not later than May 14 by mail or May 24 by email. Later bids may not be processed.

Bidder Name _____

Billing Address (w/ city, state, zip): _____

Phone: _____ Fax: _____

Email: _____

Absentee bids must be guaranteed by a valid **credit card number** and **expiration date**, unless other arrangements have been made. If you are a successful bidder, you may pay by a different method if you wish.

Circle One: Visa M/C AmEx Discover

Cardholder Name (if different from Bidder Name)

Billing Address (if different from above) _____

City _____ State _____ Zip _____

CARD NO. _____

Exp. ____/____ 3 digits on back of card ____

If you are successful bidder, do you want us to charge your auction purchases to this card? __Yes __No

Please execute these binding bids and/or donations on my behalf. I have read and agree to the Terms written in the auction catalog, and the RULES listed below on this form.

Date _____ Signature _____

Please list the MAXIMUM amount you wish to bid. We will try to buy for you at the lowest possible price.

Lot # and Description of Item	Maximum Bid
No. _____	\$ _____
No. _____	\$ _____
No. _____	\$ _____
No. _____	\$ _____
No. _____	\$ _____
No. _____	\$ _____
No. _____	\$ _____
No. _____	\$ _____
No. _____	\$ _____

RULES FOR ABSENTEE BIDDERS:

1. Absentee bids are **subject to all the Auction Terms**. Be sure you read and understand them. TERMS can be obtained by contacting David Lehmann at DavidLehmann0307@gmail.com or (281) 757-5054.
2. By sending this form, you request and authorize us to bid on the lots listed on this form up to the stated bid price. An ORCA staff member will bid on your behalf, as if you were present and bidding and will try to buy for you at the lowest possible bid. To protect the integrity of the bidding process, it is our policy not to disclose the amount of an absentee bid to other potential bidders.
3. We assume no responsibility for failure to execute these bids for any reason whatsoever.
4. All items are **sold as is where is**. TERMS can be obtained by contacting David Lehmann at DavidLehmann0307@gmail.com or (281) 757-5054.
5. Bid increments are at the auctioneer's discretion. Odd absentee bid figures will be rounded down. (i.e. \$127.34 is treated as \$125).
6. There is a 10% buyers fee subject to all winning bids (i.e. if you win a lot for \$100, you will be billed \$110). Please bid accordingly.
7. You can arrange for shipping through a commercial shipping agent utilized by ORCA, at ORCA's discretion. Shipping fees are not included in bid amounts and are in addition to bid amounts. ORCA will work with the buyer to arrange shipping, after lots are paid for.

Bids may be continued on back or on additional signed sheet, so long as the cover page is attached.